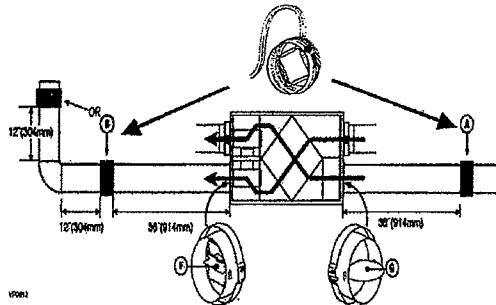




HRV Specifications for R-2000 Houses

In addition to typical HRV installations requirements, the following highlights specific requirements for R-2000 houses:

1. Installers must have attended the HRAI Ventilation or Designer Course.
2. The HRV must be HVI Certified and must have the appropriate energy performance requirements for specific R-2000 house. **(The builder's R-2000 Design Evaluator will specify for each house, the energy performance and the airflow requirements of an acceptable HRV).**
3. The unit must be balanced and balancing flow stations must be left in place. (Some HRV's have balancing taps integrated in the unit. This is acceptable).



4. The exhaust grille in the kitchen must have a grease filter
5. The two ducts to outside shall be 6" diameter insulated flexible duct, kept as short as possible. The vapour barrier on the insulated ducts must be perfectly taped to the HRV collars and to the air barrier at the outside wall penetration.
6. The vent hoods must be sealed in place.
7. The fresh air intake must be at least 18" above ground and 6" away from all other exhaust or combustion vents
8. All joints in duct work must be taped.
9. A main control is required to be mounted in a central location. (Most installers mount the control next to the thermostat). It requires a four-conductor low voltage wire back to the unit
10. The unit shall be balanced after installation and a sticker or note attached to the unit indicating the balanced flow rate. The installer shall provide his HRAI Ventilation Installers Number to the R-2000 design evaluator.