

**INTEGRATED
CAPITAL MANAGEMENT
SYSTEM**

2008/2009

ONTARIO REGION

INTRODUCTION	- 3
HOW TO SUBMIT REPORTS	- 4
CHANGES IN CAPITAL ASSETS ANNUAL REPORT	5 - 11
HOUSING AND INFRASTRUCTURE ASSETS ANNUAL REPORT	12 - 16
MUNICIPAL TYPE AGREEMENTS	17 - 24
ACRS PROJECTS ANNUAL REPORT	- 25
APPENDIXES:	
A - SITE LISTING	26 - 33
B - ASSET CODE LISTING	34 - 42
C - FUNDED ASSET CODE LISTING	43 - 44
D - ASSET CODE DEFINITIONS	45 - 65

Introduction:

The Integrated Capital Management System (ICMS) is an automated system that records information for the Operation and Maintenance of Infrastructure sub-activity. It contains base level information on capital assets (location of asset, asset type, asset quantity, etc.), housing information (basic community services, housing conditions, water quality, sewer services) and the results of asset inspections.

The following annual reports are outlined in this manual:

- (1) CHANGES IN CAPITAL ASSETS ANNUAL REPORT,
- (2) HOUSING AND INFRASTRUCTURE ASSETS ANNUAL REPORT,
- (3) MUNICIPAL TYPE AGREEMENTS (MTA),
- (4) ACRS PROJECTS ANNUAL REPORT.

NOTE - Formal ACRS Asset Condition Reporting System Inspections are in addition to the requirements outlined in this manual. These formal inspections are required every three years.

This is the database used to generate the annual Operation and Maintenance budget and allocations to the respective First Nations. It is a management tool for:

- . managers responsible for the operations, maintenance and construction of capital assets
- . engineering and costing personnel
- . personnel responsible for the inventory data collection and maintenance for the system
- . Tribal Councils and First Nations to verify allocations, asset quantity, conditions and needs
- . ACRS provides information for First Nations maintenance plan.

It is the responsibility of the Tribal Councils/First Nations to provide this information on an annual basis to the department.

ONTARIO INAC REGIONAL OFFICE ADDRESSES

SOUTH

Indian and Northern Affairs Canada
Regional Operations South
25 St. Clair Avenue East, 8th Floor
TORONTO, ON M4T 1M2

Attention: Technical Services South

Telephone: (416) 973-6234
Facsimile: (416) 954-6329

NORTH

Indian and Northern Affairs Canada
Regional Operations North
100 Anemki Drive, Suite 101
THUNDER BAY, ON P7J 1A5

Attention: Technical Services North

Telephone: (807) 623-3534
Facsimile: (807) 623-7021

HOW TO SUBMIT REPORTS IN ONTARIO

Reports may be submitted to INAC in one of the following ways:

Via First Nations and Inuit Transfer Payment (FNITP) system:

Recipients with FNITP access for 2008/2009 may submit their reports electronically through the FNITP Recipient Reports Management Module. Please contact your regional FNITP training coordinator for more information.

By Email:

reportsontario@inac.gc.ca

By Fax:

(416) 954-2747 (Reports Ontario – Regional Operations South)
(807) 623-3536 (Reports Ontario – Regional Operations North)

By Mail:

Reports Ontario – Indian and Northern Affairs Canada
Regional Operations South
25 St. Clair Avenue East, 8th Floor
TORONTO, ON M4T 1M2

Attention: Technical Services South

or

Reports Ontario – Indian and Northern Affairs Canada
Regional Operations North
100 Anemki Drive, Suite 101
THUNDER BAY, ON P7J 1A5

Attention: Technical Services North

Changes in Capital Assets Annual Report:

This report provides a list of all capital assets on a particular site and is to be reviewed by the band and updated to indicate to INAC any additions, deletions or modifications to capital assets that are not reflected on the list provided by INAC.

Due Date: October 15th

Field Definitions:

Band Name	The official and legal name of the band.
Band Number	The number (a maximum of 3 digits and in the format 99999) assigned to the band by INAC.
Site Name	The legal name of the site or reserve.
Site Number	The number (maximum of 5 digits and in the format 99999) assigned to the site by INAC.
Asset No.	This is a four-digit number assigned to the asset. The numbers should follow the asset groupings shown below. It is very important that additions to existing assets be assigned the same asset number to provide an audit trail/history of the asset. 0001 - 3999 - Buildings 4000 - 4999 - Utilities 5000 - 5999 - Grounds 6000 - 7999 - Roads 8000 - 8999 - Bridges 9000 - 9999 - Vehicles
Asset Extension No.	This is a two-digit number assigned to all asset numbers and is required when a facility has more than one use or when there are multiples of the same asset. It indicates how many assets have the same asset number. Each will have a different extension number.
Asset Name	The descriptive name of the asset. Include a short description of the use of the asset if it is not clear from the name.
Asset Code	The asset code. Update if required
Quantity	The quantity of the asset. Update if required.
Quantity Type	Indicates the unit of measurement for the quantity (e.g. 100 square meters of building area, 10.2 km of road or 1 each of fire mini-pumper).
General Condition Rating	Indicate the general condition rating of the asset on a scale of 1 to 10. Update if required. 0 = Closed 1 - 3 = Poor 4 - 6 = Fair 7 - 9 = Good 10 = New 99 = Not Inspected

CHANGES IN CAPITAL ASSETS

Use	Indicates whether the asset is: 0 - Out of Use 1 - Permanent 2 - Temporary Update if required.
Maintained By	Indicates who is responsible for maintenance of the asset. Update if required. 1 - First Nation 2 - Department 3 - Other (e.g. near-by municipality providing maintenance under contract).
Design Life	This is the theoretical lifetime of the asset at the time of design.
Year Constructed	This is the year during which the asset construction was completed or asset (e.g. vehicle) was purchased (if new) or manufactured (if used).
Reason for Change	Provide the reason for adding, modifying or deleting an asset as follows: Additions: 1 - New Construction 2 - Not Previously Inventoried 3 - Re-entry or Deleted Asset 4 - Other Reason 10 - ACRS Inspection 11 - ACRS Site Change Modifications: 5 - Quantity 6 - Asset Code 7 - Other Reason 9 - Comments, Typing Errors 12 - ACRS Site Change 13 - ACRS Asset Code 14 - ACRS Quantity Deletions: 8 - Delete Asset 15 - ACRS Inspection
Remarks	A short description of the details or rationale for an addition, update or removal of an asset.
Approval Block Given Name, Family Name, Title, Tribal Council/Firm/First Nation Name, Date	The name and title of the person attesting that the information provided is accurate to the best of the person's knowledge, the name of the Tribal Council, Firm or First Nation for whom the individual works and the date on which the accuracy of the information was acknowledged, in the format of YYYYMMDD

Required Supporting Documents:

Documentation is required to substantiate major changes. For example, photographs, detailed dimensional sketches, completion certificates.

Helpful Hints:

Capital assets to be included:

- buildings,
- water supply and distribution systems,
- wastewater collection and disposal systems,
- electrical power supply and distribution systems,
- grounds,
- transportation,
- vehicles.

All on-reserve assets for which the department provides O & M funding must be included in ICMS. In addition, all assets clearly owned, leased and/or maintained by the department must be recorded. Assets not funded by the department may also be recorded, if desired, by the First Nation.

Excluded from inventory (not capital assets):

- movable equipment identified on the Fleet Management Information System (FMIS), operated by Public Works and Government Services Canada;
- minor equipment, furniture and items, such as radio equipment and office items;
- Land will not be included in the inventory. However, a cross-reference to Public Works and Government Services Canada's Central Real Property Inventory (CRPI) will be recorded for all immovable assets.

Addition of an Asset:

Whenever an asset is acquired, whether by construction, purchase, lease, or any other means, a new asset record must be initiated. One of the activities involved in constructing or acquiring assets should be the completion of the appropriate inventory form for inclusion in ICMS. In this way, the information can be added to the inventory as quickly as possible and, if completed by the project manager/officer, all pertinent information will be captured.

Modification of an Asset:

Whenever an asset is modified, whether by renovation, remodelling, expansion of facilities, or any other means, it will, in most cases, mean a change to the inventory information. Updating the appropriate forms should be identified as one of the asset modification activities.

It should be noted that when making additions to existing assets, a separate record should be prepared with information on the modification, cost and date, etc. It must, however, retain the same asset number, and the remarks section should also be annotated as to the changes. Care should be taken that all changes to the recorded inventory information are recorded and entered into ICMS.

Deletion of an Asset:

Whenever an asset is removed from the inventory, whether by demolition, or any other means, the appropriate asset record should be removed from the inventory by completing the Changes in Capital Assets form indicating its deletion.

Measuring Assets:

All inventory information will be recorded on the data forms in metric units. A metric conversion calculator can be used to avoid tedious manual calculations.

The term gross floor area (GFA) is the sum of all enclosed floor areas measured flat on plan to the outside face of perimeter walls, without deductions for any openings, walls, partitions or columns.

The calculation of the GFA will **include** (houses excepted) the plan areas of:

- enclosed connecting passageways;
- tunnels, floor areas and basements with headroom of 2m or more;
- crawl spaces with concrete floor and headroom of 2m or more; and attached or isolated garages.

The calculation of the GFA will **exclude** the plan areas of:

- basements and crawl spaces of houses;
- garages and carports of houses;
- a crawl space without a concrete floor;
- tunnels, crawl spaces and floor areas with headroom less than 2m; - unfinished attic areas.

The following equipment and reference documents are recommended for measuring assets:

- Changes in Capital Assets form;
- clipboards;
- pencils and paper;
- calculators;
- 10 m measuring tape;
- 50 m measuring tape;
- all site plans and as-built drawings, if available;
- one car or truck equipped with a resettable odometer that records distance in kilometres to the nearest tenth;
- camera.

Actual measurements of asset dimensions or physical counts must be made as information from site or as-built drawings may not have been updated with modifications or renovations. In

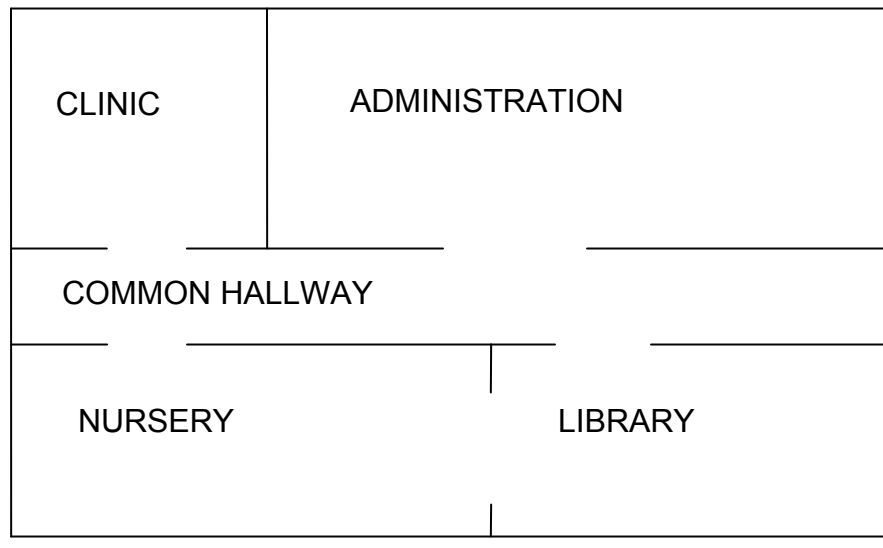
some instances, such as in the case of municipal works, as-builts are probably the most accurate data source available. However, field checks such as measurements between hydrants, etc. should be done to confirm drawing information where and when possible. First Nation maintenance personnel should also be questioned regarding unrecorded modifications and additions to assets.

Photographs should be taken of the asset and included with the changes in capital assets form.

Completion Certificates for newly constructed assets should be included to confirm that the asset is available for First Nation use.

In some instances, special or unusual situations exist that would require simplified and practical way(s) to collect and report these data in a consistent way. The guidelines for treating some common and special situations are described below.

- (a) For single purpose buildings, measure outside dimensions only.
- (b) For multi-purpose buildings, such as the one shown below,



Add hallway & wall areas to Prime Usage Area, i.e. Administration Office.

The recording procedures are as follows:

- 1) measure the outside dimensions of the building to obtain the external area of the building.
- 2) measure the respective internal area of the rooms and record the actual usage of each room.

- 3) for easier inventory calculation and for practical purposes, the Prime Usage Area of the building (i.e. in the above example, the Administration Office), should be adjusted to include the hallway and all wall/partition areas in the building.

Note that it is not necessary to measure the hallway and especially the wall/partition areas which are tedious and time consuming to obtain. Instead, the Adjusted Prime Usage Area can be obtained simply by deducting the secondary usage areas, (i.e. the library, nursery, and clinic), from the External area of the building.

In algebraic format,

Adjusted prime usage area = External building area - Secondary usage area.

Where Secondary usage area does not include hallway(s). (See table below).

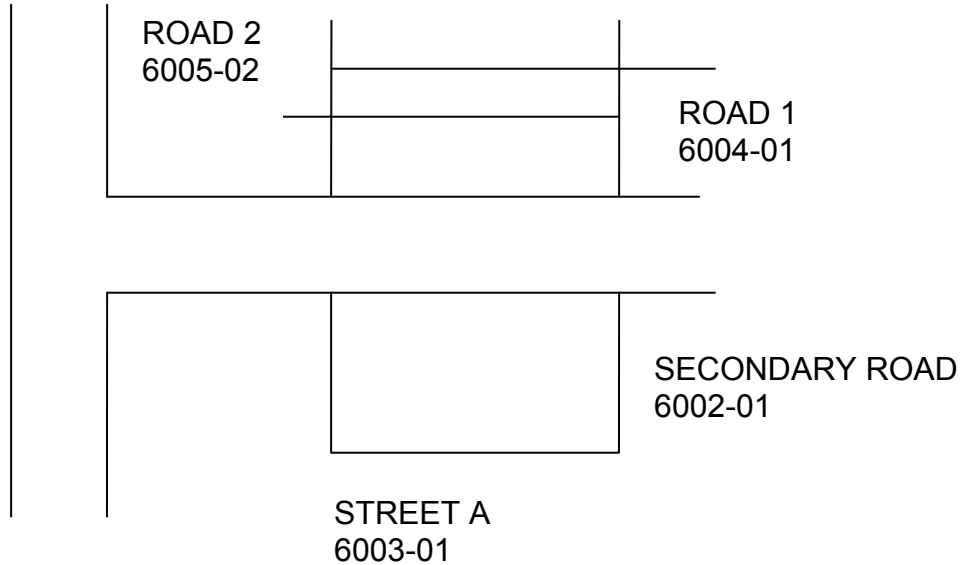
<u>External Area</u>	<u>Quantity</u>	<u>Asset #</u>	<u>Asset Class</u>
BUILDING AREA	200 sq.m.	0120	
 <u>Less Internal Areas</u>			
LIBRARY AREA	(20)	0120-02	A3E
NURSERY AREA	(50)	0120-03	A3D
CLINIC AREA	(40)	0120-04	A3C
 <u>ADJUSTED PRIME USAGE AREA</u>			
	<u>90</u>	0120-01	A1A

(i.e. ADMIN. OFFICE including hallway & all wall areas in the building).

- 4) As the dedicated usage areas are inside the same building, the asset number for each of the four dedicated usage areas should be the same, (see table above).

5) For Roads, such as the road system shown below,

MAIN ROAD 6001-02



MAIN ROAD 6001-01

The above sketch illustrates how the **MAIN ROAD** is comprised of two extensions, and **ROAD 1** and **ROAD 2** can be comprised of several small arteries with the same asset number. This approach cuts down on the number of records in the system.

However, where individual situations exist and where regional management consider it justified, individual extension numbers may be assigned to each of the small segments for identification of specific sections of the arterial roads.

HOUSING AND INFRASTRUCTURE ASSETS

Housing and Infrastructure Assets Annual Report:

This report provides a summary of changes in housing, housing infrastructure and community services. The data from this report is used to demonstrate a measure of progress and accountability to Parliament as well as for planning purposes to determine outstanding requirements.

Due Date: October 15th

Field Definitions:

Tribal Council Name	The official and legal name of the Tribal Council.
Tribal Council Number	The number (maximum of 5 digits and in the format 99999) assigned to the Tribal Council by INAC.
Band Name	The official and legal name of the band
Band Number	The number (maximum of 3 digits between 1 and 999) assigned to the band by INAC
Site Name	The legal name of site or reserve
Site Number	The number (maximum of 5 digits and in the format 99999) assigned to the site by INAC
Community Service	
Electricity	<p>Indicates the type/level of community electrification service provided to this site. Available choices are:</p> <ul style="list-style-type: none"> 0 - No Service 1 - Grid 2 - Diesel Generated, Full Service 3 - Diesel Generated, Restricted Service 4 - Other Generated, Full Service 5 - Other Generated, Restricted Service <p>NOTE: Electrification service provided to the community and identified by codes 1, 2 and 4 are considered adequate; those identified by codes 0, 3 and 5 are considered inadequate.</p>
Solid Waste	<p>Indicate the adequacy of the solid waste disposal facility used by this site. Available choices are:</p> <ul style="list-style-type: none"> 1 - Adequate: The solid waste from the housing unit is disposed to a facility that is consistent with provincial/territorial practice and DRM 10-7/42 (under revision) and does not constitute a health or environmental threat. 2 - Inadequate: The solid waste from the housing unit is disposed to a facility that is inconsistent with provincial/territorial practice and DRM 10-7/42 (under revision) and poses a health or environmental hazard. 3 - No Service Provided <p>NOTE: A solid waste facility should not be deemed inadequate due to poor operator technique, neglect or improper operation.</p>

HOUSING AND INFRASTRUCTURE ASSETS

Road Access	Indicate the adequacy of road access within this site. Available choices are: 0 - Inadequate 1 - Adequate
Fire Protection	Indicate the adequacy of the fire protection service at this site. Available choices are: 1. Verified: i.e. Service which is verified by a site survey conducted by a fire protection specialist and which either: - meets Levels of Service Standard - Fire Protection Services (INAC Corporate Manuals System, Vol. 1, Part 1-1, Appendix A) and is provided with a staffed and trained fire department; or - has a substitute mutual aid or Municipal Type Agreement which provides the required material and staff. 2. Not Verified: i.e. Service that: - is not verified by a site survey conducted by a fire protection specialist; and/or - does not meet Levels of Service Standard - Fire Protection Services (INAC Corporate Manuals System, Vol. 1, Part 1-1, Appendix A); and/or - does not provide a staffed and trained fire department; and/or - does not have a mutual aid or Municipal Type Agreement to provide the required material and staff. 3 - No Service Provided
Contract (Yes/No)	Is there a fire protection contract or a mutual aid contact between this site and an outside agency? NOTE: If Contract is Yes, then the Contractor field must be filled in.
Contractor	The name of the outside agency providing fire protection or mutual aid services to this site. NOTE: If aContract@ equals Yes, this field must be filled in.
Water Servicing - Water Source	
Ground	Indicate the number of housing units with a ground source water supply.
Surface	Indicate the number of housing units with surface source water supply.
Total No. Housing Units	The total number of housing units with ground and surface water supply will be calculated automatically if using the electronic form, otherwise calculate the total and enter it in this field. It should match with the Actual Total Number of housing units. The total = Ground + Surface
Water Servicing - Mode of Water Delivery	
Community System	Indicate the number of housing units with water service provided by a community system. A community system implies a piped system with full treatment. A piped water system has mains and should also have fire hydrants. This includes both surface water source and groundwater (well) source systems.

HOUSING AND INFRASTRUCTURE ASSETS

Individual System	Indicate the number of housing units with water service provided by an individual system which can be an individual well or a surface water intake with full or partial treatment and is connected to the house by pipe.
Truck Water A	Indicate the number of housing units with water services provided by a truck. The houses have plumbing and are equipped to accept the trucked water service (i.e., cistern and pressured system).
Truck Water B	Indicate the number of housing units with water service provided by a truck and stored in 45 gallon barrel drums. Because the houses have not been plumbed to accept the service (i.e., cistern and pressurized system), Truck B is not considered as a basic level of service.
No Service	Indicate the number of housing units with no water service.
Total No. Housing Units	The total number of housing units will be calculated automatically if using the electronic form, otherwise calculate the total and enter it in this field. It should match with the Actual Total Number of housing units. The total = Community System + Individual System + Truck Water A + Truck Water B + No. Service.
Sewage Servicing - Sewage Disposal Destination	
Treatment	Indicate the number of housing units with sewage disposal to a treatment facility. Treatment facility includes lagoons, aerated lagoons, extended aeration plants, rotating biological contactors, sequencing batch reactors, etc.
Ground	Indicate the number of housing units with sewage disposal to ground. Ground disposal means septic tile fields (individual and community) that meet applicable environmental and health standards.
Total No. Housing Units	The total number of housing units will be calculated automatically if using the electronic form, otherwise calculate the total and enter it in this field. It should match with the Actual Total Number of housing units. The total = Treatment + Ground.
Sewage Servicing - Mode of Sewage Collection	
Piped Community	Indicate the number of housing units with piped sewage collection to a community septic tank and field.
Piped Individual	Indicate the number of housing units with waste water disposal provided by an individual septic tank and field.
Trucked	Indicate the number of housing units with waste water disposal provided by a septic truck.
No Service	Indicate the number of housing units with no service for sewage collection.
Total No. Housing Units	The total number of housing units will be calculated automatically if using the electronic form, otherwise calculate the total and enter it in this field. It should match with the Actual Total Number of housing units. The total = Piped Community + Piped Individual + Trucked + No Service

HOUSING AND INFRASTRUCTURE ASSETS

Housing Units	
Last Year=s Total No. Housing Units	Indicate the total number of housing units reported in the prior year=s report.
Housing Completed This Year	Indicate the total number of housing units constructed during the reporting period.
Houses Deleted This Year	Indicate the total number of housing units lost due to fire, natural disasters, etc. or demolished due to poor condition during the reporting period.
Adjustment	Indicate the number of additions or subtractions to housing units needed to match the Total No. Housing Units with the Actual Total number of housing units on site.
Total No. Housing Units	This is the Actual Total Number of housing units on the site. It will be calculated automatically if using the electronic form, otherwise calculate the total and enter it in this field. All other fields showing the total number of housing units should match to this field. Adjust the number of housing units in the Adjustment field as required to indicate the correct total. The total = Last Year=s Total + Housing Completed This Year B Houses Deleted This Year + Adjustment
Total No. Renovated	Indicate the total number of housing units renovated during the reporting period.
Housing Conditions	
Replacement Required	Indicate the number of housing units that require replacement. Specifically, these houses are: - no longer habitable as a result of, for example, fires or natural disasters, or; - declared unsafe or unfit for human habitation by a certified inspector because they no longer meet basic quality standards and cannot be economically renovated to an acceptable condition.
Major Renovations Required	Indicate the number of housing units that need major renovations. These could include, but are not limited to: - extensive structural faults such as rotting or sagging foundations; - extensive structural repairs to walls, floors, ceilings or roofs; and - replacement and/or upgrading of defective plumbing and/or electrical wiring.
Total Adequate Units	Indicate the number of housing units that are considered adequate. An Adequate dwelling is defined as one that does not require Major Renovations or Replacement and does possess basic plumbing facilities, specifically, hot and cold running water, inside toilets and installed baths or showers. NOTE: The calculation of Adequate housing is based on the formula: Adequate = Total Units - Replacement Required - Major Renovations. Required.
Total No. Housing Units	The total number of housing units will be calculated automatically if using the electronic form, otherwise calculate the total and enter it in this field. It should match with the Actual Total Number of housing units. The total = Replacement Required + Major Renovations Required + Total Adequate Units
Plumbing Required	Indicate the number of housing units that require basic indoor plumbing facilities, hot and cold running water and/or a bath or shower.

HOUSING AND INFRASTRUCTURE ASSETS

Given Name, Family Name, Title, Date	The name and title of the person attesting that the information provided is accurate to the best of the person's knowledge and the date on which the accuracy of the information was acknowledged, in the format of YYYYMMDD.
--------------------------------------	---

Required Supporting Documents: None

Municipal Type Agreements (MTAs)

A Municipal Type Agreement is defined as an agreement between the Department or First Nation and another federal department, provincial government, municipal government, city or town government, private contractor (native or other), individual (native or other), or organization (federal, provincial, local native).

The intent of the agreement is to purchase certain specified services (instead of providing them directly) for fundable community facilities services where there are no assets that are covered by the Gross Funding Requirements (GFR) calculations and therefore are formula funded.

Municipal Type Agreements are to be negotiated based on INAC established levels of service standards. Municipal Type Agreements may be considered subject to least cost comparisons with other forms of O&M service delivery. This can be determined on the basis of a life cycle cost analysis.

For the purpose of funding annual operation and maintenance dollars to a First Nation, MTA=s must include the provision of services for the following:

- < water supply
- < water supply and distribution
- < waste water disposal
- < wastewater collection and disposal
- < garbage collection (will be entered into MTA listing but is not regionally funded)
- < garbage disposal
- < roads maintenance
- < bridge maintenance
- < railway crossing maintenance
- < fire fighting services

For the purposes of funding annual operation and maintenance dollars to a First Nation, the following Municipal Type Agreements **WILL NOT** be considered:

- < Animal Control Services
- < Policing Agreements
- < Contracts for Provision and Delivery of Fuel for Heating
- < Contracts for Provision and Delivery of Fuel for Electricity Generation
- < Contracts for Provision of Cleaning Services
- < Contracts for provision of Fire Alarm System Inspection and Repair Services
- < Bridge Operation

- < Winter Road Operation and Maintenance
- < Cat-Train Operation and Maintenance
- < Ferry Operation and Maintenance
- < Residential Site Leases
- < Emergency Preparedness Agreements
- < Education Facility Rentals

In order to be eligible for funding, the following information must be provided by the First Nation/Tribal Council/OFNTSC on a signed agreement (MTA):

- < First Nation number
- < First Nation name
- < Reserve number
- < Reserve name
- < Description of service provided
- < Cost of service provided
- < Name of supplier of service
- < Number of houses serviced
- < Cost Sharing Arrangement for cost sharing MTA
- < Where the MTA is for a group of services, the service cost of each type of Service must be identified

Process for Recording, Approving and Funding MTAs:

MTA funding requirements are to be entered directly into the MTA module in the Integrated Capital Management System (ICMS) during the annual ICMS update. INAC expects First Nations to enter into MTAs directly with the provinces/ municipalities or other organizations on their own behalf. A signed copy of the MTA must be on file in the INAC office.

Existing MTAs:

Where there is a significant year-to-year increase (plus 10%) in the cost of an existing MTA, INAC requires a written explanation for the increase. The written explanation, updated copy of the MTA and a Sr. Funding Services Officer=s recommendation for funding the increase must be submitted to the Regional Manager, Capital South/North (as appropriate) for review and analysis. The review will include Capital, RPS and Corporate Services personnel (as required) and the appropriate Funding Services Officer will be advised of the decision by the Director of Funding Services South/North (as appropriate) so that the decision can be relayed to the First Nation and the financial arrangement will be amended dependent on the approved allocation as stipulated in the decision correspondence. A copy of the MTA and the decision letter will be forwarded to Corporate Services for their information.

New MTAs

New MTAs **WILL ONLY BE CONSIDERED** under special circumstances. It is expected that a life cycle analysis be completed prior to initiating the new MTA. An explanation must be provided detailing how the service was provided prior to the new MTA and why this service is required now. The written explanation, a copy of the new MTA and a Sr. Funding Services Officer's recommendation for funding the MTA must be submitted to the Regional Manager, Capital South/North (as appropriate) for review and analysis. The review will include Capital, RPS and Corporate Services personnel (as required) and the appropriate Funding Services Officer will be advised of the decision by the Director of Funding Services North/South (as appropriate) so that the decision can be relayed to the First Nation and the financial arrangement will be amended dependent on the approved allocation as stipulated in the decision correspondence. A copy of the MTA and the decision will be forwarded to Corporate Services for their information.

Funding MTAs:

Funding Services will look to their O&M discretionary budget first for funding acceptable MTAs (10% or more increases or new ones). When Program discretionary O&M funds are depleted a request will need to be put forth to the Financial Management Committee (FMSC) which may require additional time for processing.

Accepted MTAs will be subsidised to the Net Funding Requirement (NFR) factors established by Headquarters for service (asset) category. Please refer to the Corporate Manuals System, the Capital Facilities and Maintenance Section, the Operation and Maintenance Directive amended March 31, 1998. For example, utility services for water, wastewater, electrical power and solid waste will be subsidized at 80% of the total negotiated price of the MTA while fire fighting, roads and bridge maintenance services will be subsidized at 90% of the total negotiated price of the MTA. First Nations are expected to make up any difference in funding requirements through user fees or other financial sources.

Note:

If the request for a possible requirement for an MTA should come up during the fiscal year, the Sr. Funding Services Officer should discuss alternates for INAC financial support with the Regional Manager, Capital South/North (as appropriate) prior to advising the First Nation to proceed with negotiating the fundable service agreement (as defined above) or investigating an alternate fundable source.

It must be clear to First Nations that they cannot enter into an MTA simply to increase funding for a specific activity. Also, it must be clear to First Nations that MTA=s are not to replace the use of capital construction.

Definitions (Requirements):

Any agreement or contract must contain the following information.

- DATES:** There must be 2 dates, the date on which the agreement is signed and the period for which the services must be supplied
- SERVICE:** There must be an itemized description of what is to be supplied, the quantity, the quality, an address or site for the desired service and a schedule or interval for the service.
- CONDITIONS:** Who supplies manpower, if required Terms of payment
Who is responsible for taxes and duties Insurance, injury, compensation.
- PARTIES INVOLVED:** Any agreement is made between 2 or more individuals or groups of individuals, 2 or more agencies, companies, etc. The names must be stated.
- SPECIAL CONDITIONS:** Some services require special conditions based on their nature, urgency, and extent (e.g. fire protection service will require "the contracted neighbouring fire services to be on distressed site within 10 to 15 minutes of call, equipped with, etc.).
- PRICE (cost):** Is a dollar amount, based on the nature and extent of the services to be provided. This price can be:
- a fixed or lump sum price
 - an upset limit
 - a cost plus
 - a unit price
- SIGNATURES:** The agreement must be signed and dated by authorized individuals only from both parties. Signatures of both parties must be witnessed by the witnesses signing next to the appropriate party signature.

Sample Agreement:

The following is a sample agreement and can be adapted and used for any type of service. Anyone who wishes to use this agreement will be responsible for any claims that arise. Bands will be responsible to seek legal opinion since this agreement is generic.

Project No.

Contract No.

THIS AGREEMENT is made at this19....

BETWEEN:

FIRST NATION

FIRST NATION NUMBER.....

RESERVE NAME

RESERVE NUMBER

ADDRESS OF FIRST NATION.....

**(hereinafter called "the Owner")
OF THE FIRST PART**

- and -

NAME OF SUPPLIER

ADDRESS OF SUPPLIER

**(hereinafter called "The Contractor")
OF THE SECOND PART**

WITNESSETH

That the Owner and the Contractor in consideration of the fulfilment of their respective promises and obligations herein agree with each other as follows:

ARTICLE 1

(a) A detailed description of the service(s) is (are):

(i)

(ii)

(iii)

(iv)

(OR ATTACH ADDITIONAL SHEETS TO THE DOCUMENT IF THIS SPACE IS INADEQUATE)

(b) The Contractor shall, for the prices set out in this agreement and except as otherwise specifically provided, provide at no additional cost to the Owner all and every kind of labour, machinery, plant, structures, roads, ways, materials, appliances, articles and things necessary for the due execution and completion of all the work set out in this Contract and shall forthwith according to the instructions of the agreement, commence the works and diligently execute the respective portions thereof, and deliver the works complete in every manner to the Owner within the time specified in the Contract.

ARTICLE 2

In the event that the agreement provides for and contains a Contingency Allowance, it is understood and agreed that such Contingency Allowance is merely for the convenience of accounting by the Owner, and the Contractor is not entitled to payment thereof except for extra or additional work carried out by him as directed by the Owner in writing and in accordance with the Contract and only to the extent of such extra or additional work.

ARTICLE 3

The Contractor shall not without the consent in writing of the Owner and without restricting in any way the provisions of the Agreement, make any assignment of any part or the whole of any monies due or to become due under the provisions of this Contract.

ARTICLE 4

The Contractor agrees to execute all of the works of this Agreement for a (lump sum) price of dollars subject to Article 2 hereof and subject to such additions and deductions as may properly be made under the terms hereof. Payments will be made at a monthly basis 30 days after the submission of an invoice and

the approval of quantity/quality of works by the Owner. A 1% per month interest will be paid to the Contractor for any delay in payments.

ARTICLE 5

Where any notice, direction or other communication is required to be or may be given or made by one of the parties hereto to the other, it shall be deemed sufficiently given or made if mailed or delivered in writing to such party at the following addresses:

The Owner:
..... (address)
.....
.....
Attention: Band Manager

The Contractor:
..... (address)
.....
.....
Attention: Project Manager

ARTICLE 6

The Contractor will be responsible for any damages caused to the property of the Owner by his negligence directly or indirectly in performing his job during the life of this contract.

ARTICLE 7

Time shall be deemed the essence of this Contract.
(State schedule or interval of service.)

ARTICLE 8

The Contractor declares that in entering into this Agreement he has either investigated for himself the character of the work and all local site conditions that might affect the acceptance or performance of the work, or that not having so investigated, he acknowledges that his responsibility under the Contract is in no way reduced or limited thereby and, in either case, he is willing to assume and does hereby assume all risk of conditions arising, developing, or

being revealed in the course of the work which might or could make the work, or any items thereof, more expensive in character, or more onerous to fulfil, than was contemplated or known when the tender was made or the Contract signed. The Contractor also declares that he did not and does not rely upon information furnished by any methods whatsoever by the Owner or its officers, employees or agents, being aware that any information from such resources was and is approximate and speculative only, and was not in any manner warranted or guaranteed by the Owner.

ARTICLE 9

This Agreement shall apply to and be binding on the parties hereto and their successors, administrators, executors and assigns and each of them.

(IN WITNESS WHEREOF the parties hereto have hereunto set their hands and seals the day and year first above written or caused their corporate seals to be affixed, attested by the signature of their proper officers, as the case may be.)

CONTRACTOR: _____
SIGNED

WITNESS: _____
SIGNED

OWNER: _____
SIGNED

WITNESS: _____
SIGNED

ACRS Projects Annual Report:

As part of the 3 year ACRS inspections, ACRS projects are identified to protect the health and safety of asset users and either prolong the life or maintain the operation of assets. The purpose of this report is to follow up on these important tasks.

Due Date: October 15th

Field Definitions:

Band Name	The official and legal name of the band.
Band Number	The number (a maximum of 3 digits between 1 and 999) assigned to the band by INAC.
Site Name	The legal name of the site or reserve.
Site Number	The number (a maximum of 5 digits and in the format 99999) assigned to the site by INAC.
Unique Identifier	For INAC use only.
Asset No.	The asset number associated with the ACRS project.
Asset Extension No.	The asset extension number associated with the ACRS project.
ACRS Project No.	The ACRS project number.
Description	The description of the ACRS project as it appears in the system.
Completion Status	Indicate the status of the project: 0 - Outstanding 1 - Completed 2 - Cancelled
Date of Completion/ Cancellation	The year in which the project was completed or cancelled.
Remarks	Any remarks relating specifically to the updated condition of the particular asset being reported on.
Approval Block Given Name, Family Name, Title, Date	The name and title of the person attesting that the information provided is accurate to the best of the person's knowledge and the date on which the accuracy of this information was acknowledged, in the format of YYYYMMDD.

Required Supporting Documentation: None

SITE FILE LISTING

F.N. No.	First Nation	Site No	Site	City Centre No.	City Centre	Zone
120	MISSISSAUGAS OF THE CREDIT	6223	NEW CREDIT NO. 40A	9	TORONTO	1
121	SIX NATIONS OF THE GRAND RIVER	6224	GLEBE FARM NO. 40B	9	TORONTO	1
121	SIX NATIONS OF THE GRAND RIVER	6225	SIX NATIONS NO. 40	9	TORONTO	1
122	CHIPPEWAS OF NAWASH FIRST	6218	NEYAASHIINIGMIING	9	TORONTO	2
122	CHIPPEWAS OF NAWASH FIRST	6219	CAPE CROKER HUNTING GRD NO. 60B	9	TORONTO	2
123	SAUGEEN	6143	SAUGEEN & CAPE CROKER FSH IS. NO. 1	9	TORONTO	2
123	SAUGEEN	6220	CHIEF'S POINT NO. 28	9	TORONTO	2
123	SAUGEEN	6221	SAUGEEN NO. 29	9	TORONTO	2
123	SAUGEEN	6222	SAUGEEN HUNTING GROUND	9	TORONTO	2
124	BIG GRASSY	6226	BIG GRASSY RIVER NO. 35G	13	THUNDER BAY	2
124	BIG GRASSY	6227	LAKE OF THE WOODS NO. 35	13	THUNDER BAY	2
124	BIG GRASSY	6228	NAONGASHING NO. 35A	13	THUNDER BAY	2
124	BIG GRASSY	6229	OBABIKONG NO. 35B	13	THUNDER BAY	2
125	ANISHNAABEG OF NAONGASHIIN	6144	SAUG-A-GAW-SING NO.	13	THUNDER BAY	2
125	ANISHNAABEG OF NAONGASHIING	6230	BIG ISLAND NO. 31D	13	THUNDER BAY	2
125	ANISHNAABEG OF NAONGASHIING	6231	BIG ISLAND NO. 31E	13	THUNDER BAY	2
125	ANISHNAABEG OF NAONGASHIING	6232	BIG ISLAND NO. 31F	13	THUNDER BAY	2
125	ANISHNAABEG OF NAONGASHIING	6233	BIG ISLAND MAINLAND NO. 93	13	THUNDER BAY	2
125	ANISHNAABEG OF NAONGASHIING	6234	LAKE OF THE WOODS NO. 31B	13	THUNDER BAY	2
125	ANISHNAABEG OF NAONGASHIING	6235	LAKE OF THE WOODS NO. 31C	13	THUNDER BAY	2
125	ANISHNAABEG OF NAONGASHIING	6236	LAKE OF THE WOODS NO. 31G	13	THUNDER BAY	2
125	ANISHNAABEG OF NAONGASHIING	6237	LAKE OF THE WOODS NO. 31H	13	THUNDER BAY	2
125	ANISHNAABEG OF NAONGASHIING	6238	NAONGASHING NO. 31A	13	THUNDER BAY	2
125	ANISHNAABEG OF NAONGASHIING	6239	SHOAL LAKE NO. 31J	13	THUNDER BAY	2
126	COUCHICHING FIRST NATION	6241	COUCHICHING NO. 16A	13	THUNDER BAY	1
127	LAC LA CROIX	6242	NEGUAGUON LAKE NO. 25D	13	THUNDER BAY	2

SITE FILE LISTING

F.N. No.	First Nation	Site No	Site	City Centre No.	City Centre	Zone
128	NAICATCHEWENIN	6243	RAINY LAKE NO. 17A	13	THUNDER BAY	2
128	NAICATCHEWENIN	6244	RAINY LAKE NO. 17B	13	THUNDER BAY	2
129	NICICKOUSEMENECANING	6245	RAINY LAKE NO. 26A	13	THUNDER BAY	2
129	NICICKOUSEMENECANING	6246	RAINY LAKE NO. 26B	13	THUNDER BAY	2
129	NICICKOUSEMENECANING	6247	RAINY LAKE NO. 26C	13	THUNDER BAY	2
130	RAINY RIVER	6146	LONG SAULT NO. 12	13	THUNDER BAY	2
130	RAINY RIVER	6248	MANITOU RAPIDS NO. 11	13	THUNDER BAY	2
130	RAINY RIVER	6249	WILD LANDS NO. 15M	13	THUNDER BAY	2
131	OJIBWAYS OF ONIGAMING FIRST NA	6250	SABASKONG BAY NO. 35C	13	THUNDER BAY	2
131	OJIBWAYS OF ONIGAMING FIRS	6251	SABASKONG BAY NO. 35D	13	THUNDER BAY	2
131	OJIBWAYS OF ONIGAMING FIRST NA	6252	SABASKONG BAY NO. 35F	13	THUNDER BAY	2
131	OJIBWAYS OF ONIGAMING FIRST NA	6253	SABASKONG BAY NO. 35H	13	THUNDER BAY	2
132	SEINE RIVER FIRST NATION	6254	SEINE RIVER NO. 23A	13	THUNDER BAY	2
132	SEINE RIVER FIRST NATION	6255	SEINE RIVER NO. 23B	13	THUNDER BAY	2
132	SEINE RIVER FIRST NATION	6256	STURGEON FALLS NO. 23	13	THUNDER BAY	2
133	STANJIKOMING FIRST NATION	6257	RAINY LAKE NO. 18C	13	THUNDER BAY	2
134	WAHTA MOHAWK	6206	WAHTA MOHAWK TERRITORY	14	SUDBURY	2
135	MOOSE DEER POINT	6208	MOOSE POINT NO. 79	14	SUDBURY	1
136	WASAUKSING FIRST NATION	6205	PARRY ISLAND FIRST NATION	14	SUDBURY	1
137	SHAWANAGA FIRST NATION	6201	SHAWANAGA NO. 17	14	SUDBURY	2
137	SHAWANAGA FIRST NATION	6202	NAISCOUTAING NO. 17A	14	SUDBURY	2
137	SHAWANAGA FIRST NATION	6203	SHAWANAGA NO. 17B	14	SUDBURY	2
138	CHIPPEWAS OF GEORGINA ISLAND	6198	CHIPPEWAS OF GEORGINA IS.	9	TORONTO	2
138	CHIPPEWAS OF GEORGINA ISLAND	6341	CHIPPEWAS OF GEORGINNA IS. 33A	9	TORONTO	2
139	CHIPPEWAS OF MNJIKANING FIRST	6195	MNJIKANING FIRST NATION NO. 32	9	TORONTO	1
140	MISSISSAUGA'S OF SCUGOG ISLAND	6196	MISSISSAUGAS OF SCUGOG IS.	9	TORONTO	1
141	BEAUSOLEIL	6199	CHRISTIAN ISLAND NO. 30	9	TORONTO	2
141	BEAUSOLEIL	6200	CHRISTIAN ISLAND NO. 30A	9	TORONTO	2

SITE FILE LISTING

F.N. No.	First Nation	Site No	Site	City Centre No.	City Centre	Zone
142	ALBANY	6258	FORT ALBANY NO. 67	15	TIMMINS	4
143	ATTAWAPISKAT	6259	ATTAWAPISKAT NO. 91	15	TIMMINS	4
143	ATTAWAPISKAT	6260	ATTAWAPISKAT NO. 91A	15	TIMMINS	4
144	MOOSE CREE FIRST NATION	6261	FACTORY ISLAND NO. 1	15	TIMMINS	4
144	MOOSE CREE FIRST NATION	6262	MOOSE FACTORY NO. 68	15	TIMMINS	4
145	NEW POST	6081	NEW POST NO. 69	15	TIMMINS	3
145	NEW POST	6263	NEW POST NO. 69A	15	TIMMINS	3
146	WEENUSK	6082	PEAWANUCK	15	TIMMINS	4
146	WEENUSK	6264	WINISK NO. 90	15	TIMMINS	4
146	WEENUSK	6358	WINISK INDIAN SETTLEMENT	15	TIMMINS	4
147	OCHIICHAGWE'BABIGO'INING F	6265	THE DALLES NO. 38C	16	WINNIPEG	1
148	EAGLE LAKE	6266	EAGLE LAKE NO. 27	16	WINNIPEG	1
149	GRASSY NARROWS FIRST NATION	6267	ENGLISH RIVER NO. 21	16	WINNIPEG	2
150	WABASEEMOONG INDEPENDENT NATION	6268	ISLINGTON NO. 29	16	WINNIPEG	2
150	WABASEEMOONG INDEPENDENT NATION	6269	ONE MAN LAKE NO. 29	16	WINNIPEG	2
150	WABASEEMOONG INDEPENDENT NATION	6270	SWAN LAKE NO. 29	16	WINNIPEG	2
151	NORTHWEST ANGLE NO. 33	6272	NORTHWEST ANGLE NO. 33B	16	WINNIPEG	4
151	NORTHWEST ANGLE NO. 33	6273	WHITEFISH BAY NO. 33A	16	WINNIPEG	4
152	NORTHWEST ANGLE NO.37	6274	BIG ISLAND NO. 37	16	WINNIPEG	2
152	NORTHWEST ANGLE NO.37	6275	LAKE OF THE WOODS NO. 34	16	WINNIPEG	2
152	NORTHWEST ANGLE NO.37	6277	LAKE OF THE WOODS NO. 37B	16	WINNIPEG	2
152	NORTHWEST ANGLE NO.37	6278	NORTHWEST ANGLE NO. 34C	16	WINNIPEG	2
152	NORTHWEST ANGLE NO.37	6279	NORTHWEST ANGLE NO. 34A & NO. 37B	16	WINNIPEG	2
152	NORTHWEST ANGLE NO.37	6280	NORTHWEST ANGLE NO. 37C	16	WINNIPEG	2
152	NORTHWEST ANGLE NO.37	6281	SHOAL LAKE NO. 34B1	16	WINNIPEG	2
152	NORTHWEST ANGLE NO.37	6282	SHOAL LAKE NO. 37A	16	WINNIPEG	2
152	NORTHWEST ANGLE NO.37	6283	WHITEFISH BAY NO. 34A	16	WINNIPEG	2
153	ANISHINABE OF WAUZHUSHK ON	6284	KENORA NO. 38B	16	WINNIPEG	1

SITE FILE LISTING

F.N. No.	First Nation	Site No	Site	City Centre No.	City Centre	Zone
154	ISKATEWIZAAGEGAN #39 INDEPENDENCE	6285	SHOAL LAKE NO. 34B2	16	WINNIPEG	2
154	ISKATEWIZAAGEGAN #39 INDEPENDENCE	6286	SHOAL LAKE NO. 39	16	WINNIPEG	2
154	ISKATEWIZAAGEGAN #39 INDEPENDENCE	6287	SHOAL LAKE NO. 39A	16	WINNIPEG	2
155	SHOAL LAKE NO.40	6288	SHOAL LAKE NO. 40	16	WINNIPEG	4
156	WABAUSKANG FIRST NATION	6289	WABAUSKANG NO. 21	16	WINNIPEG	2
157	WABIGOON LAKE OJIBWAY NATION	6290	WABIGOON LAKE NO. 27	16	WINNIPEG	2
158	NAOTKAMEGWANNING	6291	SABASKONG BAY NO. 32C	16	WINNIPEG	2
158	NAOTKAMEGWANNING	6292	WHITEFISH BAY NO. 32A	16	WINNIPEG	2
158	NAOTKAMEGWANNING	6293	YELLOW GIRL BAY NO. 32B	16	WINNIPEG	2
159	MOHAWKS OF AKWESASNE	6209	AKWESASNE NO. 15	6	MONTREAL	1
159	MOHAWKS OF AKWESASNE	6210	AKWESASNE NO. 59	6	MONTREAL	1
160	ALDERVILLE FIRST NATION	6211	ALDERVILLE FIRST NATION	9	TORONTO	1
160	ALDERVILLE FIRST NATION	6212	SUGAR ISLAND NO. 37A	9	TORONTO	1
161	CURVE LAKE	6197	ISLANDS IN THE TRENT WATER NO. 36A	9	TORONTO	1
161	CURVE LAKE	6213	CURVE LAKE FIRST NATION NO. 35	9	TORONTO	1
161	CURVE LAKE	6214	CURVE LAKE NO. 35A	9	TORONTO	1
162	HIAWATHA FIRST NATION	6215	HIAWATHA FIRST NATION	9	TORONTO	1
163	ALGONQUINS OF PIKWAKANAGAN	6216	PIKWAKANAGAN	10	OTTAWA	2
164	MOHAWKS OF THE BAY OF QUIN	6217	TYENDINAGA MOHAWK TERRITORY	9	TORONTO	1
166	CHIPPEWAS OF THE THAMES FIRST NATION	6188	CHIPPEWA OF THE THAMES NO. 42	11	LONDON	1
167	MORAVIAN OF THE THAMES	6189	MORAVIAN NO. 47	11	LONDON	1
168	MUNSEE-DELAWARE NATION	6190	MUNSEE-DELAWARE NATION NO. 1	11	LONDON	1
169	ONEIDA NATION OF THE THAMES	6191	ONEIDA NO. 41	11	LONDON	1
170	WALPOLE ISLAND	6192	WALPOLE ISLAND NO. 46	11	LONDON	1
171	CHIPPEWAS OF KETTLE AND STONY	6193	KETTLE POINT NO. 44	11	LONDON	2
172	AAMJIWNAANG	6194	SARNIA NO. 45	11	LONDON	1
173	ZHIIBAHAASING FIRST NATION	6173	ZHIIBAHAASING NO. 19	14	SUDBURY	2
173	ZHIIBAHAASING FIRST NATION	6174	ZHIIBAHAASING NO. 19A	14	SUDBURY	2

SITE FILE LISTING

F.N. No.	First Nation	Site No	Site	City Centre No.	City Centre	Zone
174	MAGNETAWAN	6204	NAGNETEWAN NO. 1	14	SUDBURY	2
175	WIKWEMIKONG	6175	WIKWEMIKONG UNCEDED NO. 26	14	SUDBURY	2
175	WIKWEMIKONG	6176	POINT GRONDINE NO. 3	14	SUDBURY	2
176	SHEGUIANDAH	6177	SHEGUIANDAH NO. 24	14	SUDBURY	2
178	SHESHEGWANING	6178	SHESHEGWANING NO. 20	14	SUDBURY	2
179	SAGAMOK ANISHNAWBEK	6186	SAGAMOK INDIAN RESER	14	SUDBURY	2
180	OJIBWAYS OF SUCKER CREEK	6179	SUCKER CREEK NO. 23	14	SUDBURY	2
181	M'CHIGEENG FIRST NATION	6180	M'CHIGEENG NO. 22	14	SUDBURY	2
182	CONSTANCE LAKE	6294	CONSTANCE LAKE NO. 92	15	TIMMINS	1
182	CONSTANCE LAKE	6295	ENGLISH RIVER NO. 66	15	TIMMINS	1
183	EABAMETOONG FIRST NATION	6296	FORT HOPE NO. 64	17	THOMPSON	4
184	LONG LAKE NO.58 FIRST NATI	6297	LONG LAKE NO. 58	13	THUNDER BAY	1
185	GINOOGAMING FIRST NATION	6298	GINOOGAMING FIRST NATION	13	THUNDER BAY	1
186	MARTIN FALLS	6299	MARTEN FALLS NO. 65	17	THOMPSON	4
187	FORT WILLIAM	6300	FORT WILLIAM NO. 52	13	THUNDER BAY	1
188	GULL BAY	6301	GULL RIVER NO. 55	13	THUNDER BAY	2
189	LAC DES MILLE LACS	6302	LAC DES MILLE LACS NO. 22A1	13	THUNDER BAY	2
189	LAC DES MILLE LACS	6303	SEINE RIVER NO. 22A2	13	THUNDER BAY	2
190	WHITESAND	6145	ARMSTRONG SETTLEMENT	13	THUNDER BAY	2
190	WHITESAND	6304	AROLAND NO. 83	13	THUNDER BAY	2
191	PAYS PLAT	6305	PAYS PLAT NO. 51	13	THUNDER BAY	2
192	OJIBWAYS OF THE PIC RIVER	6306	PIC RIVER NO. 50	13	THUNDER BAY	2
193	RED ROCK	6307	LAKE HELEN NO. 53A	13	THUNDER BAY	2
193	RED ROCK	6308	RED ROCK NO. 53	13	THUNDER BAY	2
195	PIC MOBERT	6309	PIC MOBERT RESERVE NORTH	13	THUNDER BAY	2
195	PIC MOBERT	6326	PIC MOBERT RESERVE SOUTH	13	THUNDER BAY	2
197	BIINJITIWAABIK ZAAGING ANI	6310	ROCKY BAY INDIAN RESERVE NO. 1	13	THUNDER BAY	2
198	BATCHEWANA FIRST NATION	6181	GOULAIS BAY NO. 15A	12	SAULT STE MARIE	1

SITE FILE LISTING

F.N. No.	First Nation	Site No	Site	City Centre No.	City Centre	Zone
198	BATCHEWANA FIRST NATION	6182	RANKIN LOCATION NO. 15D	12	SAULT STE MARIE	1
198	BATCHEWANA FIRST NATION	6183	OBADJIWAN NO. 15E	12	SAULT STE MARIE	1
199	GARDEN RIVER FIRST NATION	6184	GARDEN RIVER NO. 14	12	SAULT STE MARIE	1
200	MISSISSAUGA	6159	MISSISSAGI RIVER NO. 8	12	SAULT STE MARIE	2
201	SERPENT RIVER	6185	SERPENT RIVER NO. 7	12	SAULT STE MARIE	2
202	THESSALON	6187	THESSALON NO. 12	12	SAULT STE MARIE	2
203	MISHKEEGOGAMANG	6313	OSNABURGH NO. 63A	13	THUNDER BAY	2
203	MISHKEEGOGAMANG	6314	OSNABURGH NO. 63B	13	THUNDER BAY	2
204	NORTH CARIBOU LAKE	6315	WEAGAMOW LAKE INDIAN RESERVE NO. 87	17	THOMPSON	4
205	LAC SEUL	6316	LAC SEUL NO. 28	13	THUNDER BAY	4
206	WAPEKEKA	6317	WAPEKEKA RESERVE NO. 1	17	THOMPSON	4
206	WAPEKEKA	6318	WAPEKEKA RESERVE NO. 2	17	THOMPSON	4
207	BEARSKIN LAKE	6319	BEARSKIN LAKE	17	THOMPSON	4
208	PIKANGIKUM	6320	PIKANGIKUM NO. 14	17	THOMPSON	4
209	KITCHENUHMAYKOOSIB INNINUW	6321	KITCHENUHMAYKOOSIB AAKI NO. 84	17	THOMPSON	4
210	KASABONIKA LAKE	6322	KASABONIKA LAKE	17	THOMPSON	4
211	SANDY LAKE	6323	SANDY LAKE NO. 88	17	THOMPSON	4
212	KINGFISHER	6324	KINGFISHER LAKE NO. 1	17	THOMPSON	4
213	MUSKRAT DAM LAKE	6327	MUSKRAT DAM LAKE	17	THOMPSON	4
214	SACHIGO LAKE	6328	SACHIGO LAKE NO. 1	17	THOMPSON	4
214	SACHIGO LAKE	6329	SACHIGO LAKE NO. 2	17	THOMPSON	4
214	SACHIGO LAKE	6330	SACHIGO LAKE NO. 3	17	THOMPSON	4
215	FORT SEVERN	6331	FORT SEVERN NO. 89	17	THOMPSON	4
216	CAT LAKE	6332	CAT LAKE NO. 63C	17	THOMPSON	4
217	WUNNUMIN	6333	WUNNUMIN NO. 1	17	THOMPSON	4
217	WUNNUMIN	6334	WUNNUMIN NO. 2	17	THOMPSON	4
218	DOKIS	6150	DOKIS NO. 9	14	SUDBURY	2
219	MATACHEWAN	6151	MATACHEWAN NO. 72	15	TIMMINS	2

SITE FILE LISTING

F.N. No.	First Nation	Site No	Site	City Centre No.	City Centre	Zone
220	NIPISSING FIRST NATION	6152	NIPISSING NO. 10	14	SUDBURY	1
221	CHAPLEAU CREE FIRST NATION	6153	CHAPLEAU NO. 75	15	TIMMINS	2
222	TEMAGAMI FIRST NATION	6154	BEAR ISLAND NO. 1	14	SUDBURY	4
223	MISSANABIE CREE	6155	MISSANABIE NO. 62	12	SAULT STE MARIE	2
224	WHITEFISH LAKE	6156	WHITEFISH LAKE NO. 6	14	SUDBURY	1
225	MICHIPICOTEN	6157	GROS CAP NO. 49	12	SAULT STE MARIE	2
225	MICHIPICOTEN	6158	GROS CAP INDIAN VILLAGE NO. 49A	12	SAULT STE MARIE	2
226	MATTAGAMI	6160	MATTAGAMI NO. 71	15	TIMMINS	2
227	FLYING POST	6161	FLYING POST NO. 73	15	TIMMINS	2
228	BRUNSWICK HOUSE	6162	MOUNTBATTEN NO. 76A	15	TIMMINS	2
228	BRUNSWICK HOUSE	6163	DUCK LAKE NO. 76B	15	TIMMINS	2
229	CHAPLEAU OJIBWAY	6164	CHAPLEAU NO. 61	15	TIMMINS	2
229	CHAPLEAU OJIBWAY	6165	CHAPLEAU NO. 61A	15	TIMMINS	2
229	CHAPLEAU OJIBWAY	6166	CHAPLEAU NO. 74	15	TIMMINS	2
229	CHAPLEAU OJIBWAY	6167	CHAPLEAU NO. 74A	15	TIMMINS	2
230	WHITEFISH RIVER	6168	WHITEFISH RIVER NO. 4	14	SUDBURY	2
231	HENVEY INLET FIRST NATION	6169	FRENCH RIVER NO. 13	14	SUDBURY	2
231	HENVEY INLET FIRST NATION	6170	HENVEY INLET NO. 2	14	SUDBURY	2
232	WAHNAPIITAE	6171	WAHNAPIITAE NO. 11	14	SUDBURY	1
233	WAHOSHIG	6172	ABITIBI NO. 70	15	TIMMINS	2
234	WAWAKAPEWIN	6079	WAWAKAPEWIN	17	THOMPSON	4
235	WASHAGAMIS BAY	6271	RAT PORTAGE NO. 38A	16	WINNIPEG	1
236	POPULAR HILL	6342	POPULAR HILL	17	THOMPSON	4
237	DEER LAKE	6339	DEER LAKE	17	THOMPSON	4
238	NORTH SPIRIT LAKE	6340	NORTH SPIRIT LAKE	17	THOMPSON	4
239	NESKANTAGA FIRST NATION	6355	LANSLOWNE HOUSE INDIAN SETTLEMENT	17	THOMPSON	4

SITE FILE LISTING

F.N. No.	First Nation	Site No	Site	City Centre No.	City Centre	Zone
240	WEBEQUIE	6337	WEBIQUI INDIAN SETTLEMENT	17	THOMPSON	4
241	NIBINAMIK FIRST NATION	6356	SUMMER BEAVER SETTLEMENT	17	THOMPSON	4
242	AROLAND	6080	AROLAND	13	THUNDER BAY	2
243	KASHECHEWAN	62581	KASHECHEWAN	15	TIMMINS	4
258	OJIBWAY NATION OF SAUGEEN	6078	OJIBWAY NATION OF SAUGEEN	13	THUNDER BAY	2
259	SLATE FALLS NATION	6077	SLATE FALLS INDIAN SETTLEMENT	13	THUNDER BAY	4
325	KEE-WAY-WIN	6075	KEE-WAY-WIN INDIAN SETTLEMENT	17	THOMPSON	4
325	KEE-WAY-WIN	99990	KOOCHENCHING	17	THOMPSON	4
326	MCDOWELL LAKE	6076	MCDOWELL LAKE	17	THOMPSON	4
841	NORTHWEST ANGLE 37 WINDIGO	6276	LAKE OF THE WOODS NO. 37	16	WINNIPEG	4

CAPITAL ASSETS MANAGEMENT SYSTEM ASSET CODES

Category	Cat	Class	CI	Subclass	Sub	Asset Code	Units
BUILDINGS	A	ADMINISTRATION	1	OFFICE	A	A1A	SQ.M.
BUILDINGS	A	ADMINISTRATION	1	OTHER	Z	A1Z	SQ.M.
BUILDINGS	A	OPERATIVE	2	TRADE SHOP/WORKSHOP (MUN.)	A	A2A	SQ.M.
BUILDINGS	A	OPERATIVE	2	GARAGE (MUNICIPAL)	B	A2B	SQ.M.
BUILDINGS	A	OPERATIVE	2	WAREHOUSE (BAND OR SCHOOL)	C	A2C	SQ.M.
BUILDINGS	A	OPERATIVE	2	NURSERY/GREENHOUSE	D	A2D	SQ.M.
BUILDINGS	A	OPERATIVE	2	BARN/STABLE	E	A2E	SQ.M.
BUILDINGS	A	OPERATIVE	2	FOREST FIRE TOWER	F	A2F	SQ.M.
BUILDINGS	A	OPERATIVE	2	OTHER	Z	A2Z	SQ.M.
BUILDINGS	A	INSTITUTIONAL	3	SCHOOL	A	A3A	SQ.M.
BUILDINGS	A	INSTITUTIONAL	3	DAYCARE CENTRE	B	A3B	SQ.M.
BUILDINGS	A	INSTITUTIONAL	3	CLINIC	C	A3C	SQ.M.
BUILDINGS	A	INSTITUTIONAL	3	NURSING STATION	D	A3D	SQ.M.
BUILDINGS	A	INSTITUTIONAL	3	LIBRARY	E	A3E	SQ.M.
BUILDINGS	A	INSTITUTIONAL	3	MUSEUM	F	A3F	SQ.M.
BUILDINGS	A	INSTITUTIONAL	3	POLICE STATION	G	A3G	SQ.M.
BUILDINGS	A	INSTITUTIONAL	3	FIRE STATION	H	A3H	SQ.M.
BUILDINGS	A	INSTITUTIONAL	3	CHURCH/CHAPEL	I	A3I	SQ.M.
BUILDINGS	A	INSTITUTIONAL	3	LABORATORY	J	A3J	SQ.M.
BUILDINGS	A	INSTITUTIONAL	3	TRAINING CTR (TRADES/HANDICAP)	K	A3K	SQ.M.
BUILDINGS	A	INSTITUTIONAL	3	OTHER	Z	A3Z	SQ.M.
BUILDINGS	A	RESIDENTIAL	4	SINGLE FAMILY HOUSE	A	A4A	SQ.M.
BUILDINGS	A	RESIDENTIAL	4	SEMI-DET. HOUSE (SIDE/SIDE)	B	A4B	SQ.M.
BUILDINGS	A	RESIDENTIAL	4	ROW HOUSE	C	A4C	SQ.M.
BUILDINGS	A	RESIDENTIAL	4	APARTMENT BUILDING	D	A4D	SQ.M.
BUILDINGS	A	RESIDENTIAL	4	MOBILE HOME/TRAILER	E	A4E	SQ.M.
BUILDINGS	A	RESIDENTIAL	4	BUNKHOUSE	F	A4F	SQ.M.

CAPITAL ASSETS MANAGEMENT SYSTEM ASSET CODES

Category	Cat	Class	CI	Subclass	Sub	Asset Code	Units
BUILDINGS	A	RESIDENTIAL	4	GROUP HOME	G	A4G	SQ.M.
BUILDINGS	A	RESIDENTIAL	4	DORMITORY	H	A4H	SQ.M.
BUILDINGS	A	RESIDENTIAL	4	STUDENT RESIDENCE	I	A4I	SQ.M.
BUILDINGS	A	RESIDENTIAL	4	DUPLEX (UP/DOWN)	J	A4J	SQ.M.
BUILDINGS	A	RESIDENTIAL	4	TEACHERAGE	L	A4L	SQ.M.
BUILDINGS	A	RESIDENTIAL	4	OTHER	Z	A4Z	SQ.M.
BUILDINGS	A	UTILITY	5	WATER SUPPLY/TREATMENT	A	A5A	SQ.M.
BUILDINGS	A	UTILITY	5	WASTEWATER TREATMENT DISPOSAL	B	A5B	SQ.M.
BUILDINGS	A	UTILITY	5	ELECTRIC POWER GENERATION	C	A5C	SQ.M.
BUILDINGS	A	UTILITY	5	SOLID WASTE DISPOSAL	D	A5D	SQ.M.
BUILDINGS	A	UTILITY	5	CENTRAL HEATING PLANT	E	A5E	SQ.M.
BUILDINGS	A	UTILITY	5	OTHER	Z	A5Z	SQ.M.
BUILDINGS	A	RECREATIONAL	6	CTTY REC CTR/HALL/CULT CTR	A	A6A	SQ.M.
BUILDINGS	A	RECREATIONAL	6	ARENA	B	A6B	SQ.M.
BUILDINGS	A	RECREATIONAL	6	GYMNASIUM	C	A6C	SQ.M.
BUILDINGS	A	RECREATIONAL	6	INDOOR SWIMMING POOL	D	A6D	SQ.M.
BUILDINGS	A	RECREATIONAL	6	CLUB HS/YTH CTR/SR CIT/DROP-IN	E	A6E	SQ.M.
BUILDINGS	A	RECREATIONAL	6	THEATRE	F	A6F	SQ.M.
BUILDINGS	A	RECREATIONAL	6	KITCHEN SHELTER	G	A6G	SQ.M.
BUILDINGS	A	RECREATIONAL	6	SHELTER/HUT/SKATE/BALL/PLAYGRD	H	A6H	SQ.M.
BUILDINGS	A	RECREATIONAL	6	OTHER	Z	A6Z	SQ.M.
BUILDINGS	A	COMMERCIAL	7	STORE	A	A7A	SQ.M.
BUILDINGS	A	COMMERCIAL	7	RESTAURANT	B	A7B	SQ.M.
BUILDINGS	A	COMMERCIAL	7	TAVERN	C	A7C	SQ.M.
BUILDINGS	A	COMMERCIAL	7	LAUNDROMAT	D	A7D	SQ.M.
BUILDINGS	A	COMMERCIAL	7	ARTS AND CRAFT CENTRE	E	A7E	SQ.M.
BUILDINGS	A	COMMERCIAL	7	RADIO/TV SATELITE	F	A7F	SQ.M.
BUILDINGS	A	COMMERCIAL	7	MOTEL	G	A7G	SQ.M.
BUILDINGS	A	COMMERCIAL	7	HOTEL	H	A7H	SQ.M.
BUILDINGS	A	COMMERCIAL	7	OTHER	Z	A7Z	SQ.M.

CAPITAL ASSETS MANAGEMENT SYSTEM ASSET CODES

Category	Cat	Class	CI	Subclass	Sub	Asset Code	Units
BUILDINGS	A	INDUSTRIAL	8	TANNERY	B	A8D	SQ.M.
BUILDINGS	A	INDUSTRIAL	8	MACHINE SHOP	C	A8C	SQ.M.
BUILDINGS	A	INDUSTRIAL	8	FURNITURE REPAIR/FABRICATION	D	A8D	SQ.M.
BUILDINGS	A	INDUSTRIAL	8	INDUSTRIAL WAREHOUSE	E	A8E	SQ.M.
BUILDINGS	A	INDUSTRIAL	8	SAWMILL	F	A8F	SQ.M.
BUILDINGS	A	INDUSTRIAL	8	SCHOOL BUS GARAGE	G	A8G	SQ.M.
BUILDINGS	A	INDUSTRIAL	8	HIGHWAY DEPARTMENT BUILDING	H	A8H	SQ.M.
BUILDINGS	A	INDUSTRIAL	8	OTHER	Z	A8Z	SQ.M.
UTILITY	B	WATER SUPPLY AND DISTRIBUTION SYSTEM	1	HEATED WATER MAINS	A	B1A	M.
UTILITY	B	WATER SUPPLY AND DISTRIBUTION SYSTEM	1	WATER MAINS	B	B1B	M.
UTILITY	B	WATER SUPPLY AND DISTRIBUTION SYSTEM	1	WATER TREATMENT SYSTEM	C	B1C	EA.
UTILITY	B	WATER SUPPLY AND DISTRIBUTION SYSTEM	1	WATER TREATMENT UNIT	D	B1D	EA.
UTILITY	B	WATER SUPPLY AND DISTRIBUTION SYSTEM	1	WATER STORAGE	E	B1E	EA.
UTILITY	B	WATER SUPPLY AND DISTRIBUTION SYSTEM	1	COMMUNITY WELLS	F	B1F	EA.
UTILITY	B	WATER SUPPLY AND DISTRIBUTION SYSTEM	1	WATER STANDPIPES	G	B1G	EA.
UTILITY	B	WATER SUPPLY AND DISTRIBUTION SYSTEM	1	HIGH LEVEL LIFTSTATION	H	B1H	EA.
UTILITY	B	WATER SUPPLY AND DISTRIBUTION SYSTEM	1	LOW LEVEL LIFTSTATION	I	B1I	EA.
UTILITY	B	WATER SUPPLY & DISTRIBUTION	1	GRAVITY INTAKE	J	B1J	EA.
UTILITY	B	WATER SUPPLY AND DISTRIBUTION SYSTEM	1	PRESSURE REDUCTION STATION	L	B1L	EA.
UTILITY	B	WATER SUPPLY AND DISTRIBUTION SYSTEM	1	WATER DELIVERY TYPE A - PLUMBE	M	B1M	EA.
UTILITY	B	WATER SUPPLY AND DISTRIBUTION SYSTEM	1	WATER DELIVERY TYPE B - NON-PL	N	B1N	EA.
UTILITY	B	WATER SUPPLY AND DISTRIBUTION SYSTEM	1	COMMUNITY WATER SYSTEM	P	B1P	EA.
UTILITY	B	WATER SUPPLY AND DISTRIBUTION SYSTEM	1	OTHER	Z	B1Z	
UTILITY	B	WASTE COLLECTION AND DISPOSAL SYSTEM	2	SANITARY MAIN	A	B2A	M.
UTILITY	B	WASTE COLLECTION AND DISPOSAL SYSTEM	2	STORM MAIN	B	B2B	M.
UTILITY	B	WASTE COLLECTION AND DISPOSAL SYSTEM	2	RBC/TRICKLING FILTER	C	B2C	EA.
UTILITY	B	WASTE COLLECTION AND DISPOSAL SYSTEM	2	EXTENDED AERATION PLANT	D	B2D	EA.
UTILITY	B	WASTE COLLECTION AND DISPOSAL SYSTEM	2	LAGOON	E	B2E	EA.
UTILITY	B	WASTE COLLECTION AND DISPOSAL SYSTEM	2	CTTY SEPTIC TANK AND FIELD	F	B2F	EA.
UTILITY	B	WASTE COLLECTION AND DISPOSAL SYSTEM	2	JET-PUMP DISPOSAL	G	B2G	EA.
UTILITY	B	WASTE COLLECTION AND DISPOSAL SYSTEM	2	LIFTSTATION	H	B2H	EA.
UTILITY	B	WASTE COLLECTION AND DISPOSAL SYSTEM	2	AERATED LAGOON	I	B2I	EA.

CAPITAL ASSETS MANAGEMENT SYSTEM ASSET CODES

Category	Cat	Class	CI	Subclass	Sub	Asset Code	Units
UTILITY	B	WASTE COLLECTION AND DISPOSAL SYSTEM	2	FORCEMAIN	J	B2J	M.
UTILITY	B	WASTE COLLECTION AND DISPOSAL COLLECTION	2	SEWAGE OUTFALL	K	B2K	EA.
UTILITY	B	WASTE COLLECTION AND DISPOSAL COLLECTION	2	OTHER	L	B2L	
UTILITY	B	WASTE COLLECTION AND DISPOSAL COLLECTION	2	SEWAGE PUMPOUT SERVICE	M	B2M	EA.
UTILITY	B	WASTE COLLECTION AND DISPOSAL COLLECTION	2	COMMUNITY SEWER SYSTEM	P	B2P	EA.
UTILITY	B	WASTE COLLECTION AND DISPOSAL SYSTEM	2	LOW PRESSURE CONNECTION	Q	B2Q	EA.
UTILITY	B	WASTE COLLECTION AND DISPOSAL SYSTEM	2	OTHER	Z	B2Z	
UTILITY	B	ELECTRICAL POWER SUPPLY AND DIST. SYS.	3	MINI-HYDRO	A	B3A	EA.
UTILITY	B	ELECTRICAL POWER SUPPLY AND DIST. SYS.	3	DIESEL GENERATORS	B	B3B	EA.
UTILITY	B	ELECTRICAL POWER SUPPLY AND DIST. SYS.	3	STREET LIGHTS	C	B3C	EA.
UTILITY	B	ELECTRICAL POWER SUPPLY AND DIST. SYS.	3	TRANSMISSION LINES	D	B3D	KM.
UTILITY	B	ELECTRICAL POWER SUPPLY AND DIST. SYS.	3	DISTRIBUTION LINES	E	B3E	KM.
UTILITY	B	ELECTRICAL POWER SUPPLY AND DIST. SYS.	3	OTHER	Z	B3Z	
UTILITY	B	SOLID WASTE COLLECTION AND DISPOSAL SYST	4	REFUSE SITE	A	B4A	EA.
UTILITY	B	SOLID WASTE COLLECTION AND DISPOSAL SYST	4	LANDFILL SITE	B	B4B	EA.
UTILITY	B	SOLID WASTE COLLECTION AND DISPOSAL SYST	4	INCINERATOR	C	B4C	EA.
UTILITY	B	SOLID WASTE COLLECTION AND DISPOSAL SYST	4	GARBAGE COLLECTION SERVICE	M	B4M	EA.
UTILITY	B	BULK FUEL STORAGE AND DISTRIBUTION SYSTE	5	STORAGE - NON BERMED	A	B5A	LITRE
UTILITY	B	BULK FUEL STORAGE AND DISTRIBUTION SYSTE	5	DISTRIBUTION	B	B5B	M.
UTILITY	B	BULK FUEL STORAGE AND DISTRIBUTION SYSTE	5	STORAGE - BERMED	C	B5C	LITRE
UTILITY	B	BULK FUEL STORAGE AND DISTRIBUTION SYSTE	5	STORAGE - BERMED AND LINED	D	B5D	LITRE
UTILITY	B	BULK FUEL STORAGE AND DISTRIBUTION SYSTE	5	STORAGE - SELF CONTAINED	E	B5E	LITRE
UTILITY	B	BULK FUEL STORAGE AND DISTRIBUTION SYSTE	5	STORAGE - UNDERGROUND TANKS	F	B5F	LITRE
UTILITY	B	BULK FUEL STORAGE AND DISTRIBUTION SYSTE	5	STORAGE - DAY TANKS	G	B5G	LITRE
UTILITY	B	BULK FUEL STORAGE AND DISTRIBUTION SYSTE	5	STORAGE - COMMERCIAL	H	B5H	LITRE
UTILITY	B	BULK FUEL STORAGE AND DISTRIBUTION SYSTE	5	STORAGE - THIRD PARTY	I	B5I	LITRE
UTILITY	B	BULK FUEL STORAGE AND DISTRIBUTION SYSTE	5	OTHER	Z	B5Z	

APPENDIX B

CAPITAL ASSETS MANAGEMENT SYSTEM ASSET CODES

Category	Cat	Class	CI	Subclass	Sub	Asset Code	Units
UTILITY	B	CENTRAL HEATING AND DISTRIBUTION SYSTEM	6	DISTRIBUTION	B	B6B	
UTILITY	B	CENTRAL HEATING AND DISTRIBUTION SYSTEM	6	OTHER	Z	B6Z	
GROUND	C	PORTS	0	WHARF - NON REC	A	C0A	SQ.M.
GROUND	C	PORTS	0	FLOAT - NON REC	B	C0B	SQ.M.
GROUND	C	PORTS	0	WHARF - REC	C	C0C	SQ.M.
GROUND	C	PORTS	0	OTHER	Z	C0Z	
GROUND	C	GRASS	1	UNMAINTAINED	A	C1A	SQ.M.
GROUND	C	GRASS	1	MAINTAINED	B	C1B	SQ.M.
GROUND	C	GRASS	1	OTHER	Z	C1Z	SQ.M.
GROUND	C	PARKING/COMPOUNDS	2	PAVED	A	C2A	SQ.M.
GROUND	C	PARKING/COMPOUNDS	2	GRAVEL	B	C2B	SQ.M.
GROUND	C	PARKING/COMPOUNDS	2	UNMAINTAINED	C	C2C	SQ.M.
GROUND	C	PARKING/COMPOUNDS	2	OTHER	Z	C2Z	SQ.M.
GROUND	C	TREES	3	ORNAMENTAL	A	C3A	EA.
GROUND	C	TREES	3	FOREST	B	C3B	SQ.M.
GROUND	C	TREES	3	OTHER	Z	C3Z	EA.
GROUND	C	SIDEWALKS	4	CONCRETE	A	C4A	SQ.M.
GROUND	C	SIDEWALKS	4	ASPHALT	B	C4B	SQ.M.
GROUND	C	SIDEWALKS	4	GRAVEL	C	C4C	SQ.M.
GROUND	C	SIDEWALKS	4	TRAIL	D	C4D	SQ.M.
GROUND	C	SIDEWALKS	4	OTHER	Z	C4Z	SQ.M.
GROUND	C	PLAYGROUNDS	5	TOTLOTS	A	C5A	EA.
GROUND	C	PLAYGROUNDS	5	BALL DIAMOND	B	C5B	EA.
GROUND	C	PLAYGROUNDS	5	SOCCER/FOOTBALL	C	C5C	EA.
GROUND	C	PLAYGROUNDS	5	OUTDOOR HOCKEY	D	C5D	EA.
GROUND	C	PLAYGROUNDS	5	OUTDOOR POOL	E	C5E	EA.
GROUND	C	PLAYGROUNDS	5	PICNIC AREA	F	C5F	SQ.M.
GROUND	C	PLAYGROUNDS	5	DEVELOPED BEACH AREA	G	C5G	SQ.M.
GROUND	C	PLAYGROUNDS	5	TENNIS COURT	H	C5H	EA.
GROUND	C	PLAYGROUNDS	5	TRACK AND FIELD	I	C5I	EA.

CAPITAL ASSETS MANAGEMENT SYSTEM ASSET CODES

Category	Cat	Class	CI	Subclass	Sub	Asset Code	Units
GROUNDS	C	CEMETARY	6	NO SUBCLASS	A	C6A	SQ.M.
GROUNDS	C	CEMETARY	6	OTHER	Z	C6Z	SQ.M.
GROUNDS	C	AIRFIELD	7	GRASS	A	C7A	SQ.M.
GROUNDS	C	AIRFIELD	7	PAVED	B	C7B	SQ.M.
GROUNDS	C	AIRFIELD	7	OTHER	Z	C7Z	SQ.M.
GROUNDS	C	FIRE BREAKS	8	NO SUBCLASS	A	C8A	SQ.M.
GROUNDS	C	FIRE BREAKS	8	OTHER	Z	C8Z	SQ.M.
GROUNDS	C	CAMPING GROUNDS	9	SITES	A	C9A	EA.
GROUNDS	C	CAMPING GROUNDS	9	OTHER	Z	C9Z	EA.
TRANSPORTATION	D	ROADS	1	EARTH ROADS	A	D1A	KM.
TRANSPORTATION	D	ROAD	1	GRAVEL ROADS	B	D1B	KM.
TRANSPORTATION	D	ROADS	1	SURFACE TREATED ROADS	C	D1C	KM
TRANSPORTATION	D	ROADS	1	PAVED ROADS	D	D1D	KM.
TRANSPORTATION	D	BRIDGES	2	VEHICULAR BRIDGES	A	D2A	SQ.M.
TRANSPORTATION	D	BRIDGES	2	PEDESTRIAN BRIDGES	B	D2B	SQ.M.
TRANSPORTATION	D	BRIDGES	2	LARGE CULVERTS	C	D2C	SQ.M.
TRANSPORTATION	D	RESERVE BRIDGES	2	BOARDWALK	D	D2D	SQ.M.
TRANSPORTATION	D	RESERVE BRIDGES	2	HIGH BOARDWALK	E	D2E	SQ.M.
TRANSPORTATION	D	CULVERTS	3	LONGITUDINAL	A	D3A	SQ.M.
TRANSPORTATION	D	CULVERTS	3	TRANSVERSE	B	D3B	SQ.M.
TRANSPORTATION	D	CULVERTS	3	OTHER	Z	D3Z	SQ.M.
TRANSPORTATION	D	DITCHES	4	ROADSIDE	A	D4A	SQ.M.
TRANSPORTATION	D	DITCHES	4	DRAINAGE	B	D4B	M.
TRANSPORTATION	D	DITCHES	4	OTHER	Z	D4Z	SQ.M.
TRANSPORTATION	D	TRAFFIC CONTROL DEVICES	5	SIGNS	A	D5A	EA.
TRANSPORTATION	D	TRAFFIC CONTROL DEVICES	5	TRAFFIC LIGHTS	B	D5B	EA.
TRANSPORTATION	D	TRAFFIC CONTROL DEVICES	5	OTHER	Z	D5Z	EA.
TRANSPORTATION	D	FERRIES	6	VEHICULAR	A	D6A	EA.
TRANSPORTATION	D	FERRIES	6	PEDESTRIAN	B	D6B	EA.
TRANSPORTATION	D	FERRIES	6	OTHER	Z	D6Z	EA.
TRANSPORTATION	D	OTHER ROADS	7	THIRD PARTY ROADS	A	D7A	KM.
TRANSPORTATION	D	OTHER ROADS	7	PRIVATE ACCESS ROADS	B	D7B	KM.

CAPITAL ASSETS MANAGEMENT SYSTEM ASSET CODES

Category	Cat	Class	CI	Subclass	Sub	Asset Code	Units
TRANSPORTATION	D	OTHER ROADS	7	PRIVATE ENTRANCES	C	D7C	KM.
TRANSPORTATION	D	OTHER ROADS	7	OFF-RESERVE ROADS	D	D7D	KM.
TRANSPORTATION	D	OTHER ROADS	7	CAUSEWAY	E	D7E	KM.
TRANSPORTATION	D	OTHER BRIDGES	8	THIRD PARTY BRIDGES	A	D8A	SQ.M.
TRANSPORTATION	D	OTHER BRIDGES	8	PRIVATE ACCESS BRIDGES	B	D8B	SQ.M.
TRANSPORTATION	D	OTHER BRIDGES	8	PRIVATE ENTRANCE BRIDGES	C	D8C	SQ.M.
TRANSPORTATION	D	OTHER BRIDGES	8	OFF-RESERVE BRIDGES	D	D8D	SQ.M.
TRANSPORTATION	D	OTHER STRUCTURES	9	DYKE	A	D9A	M.
TRANSPORTATION	D	OTHER STRUCTURES	9	SEAWALL	B	D9B	M.
TRANSPORTATION	D	OTHER STRUCTURES	9	RETAINING WALL	C	D9C	SQ.M.
TRANSPORTATION	D	OTHER STRUCTURES	9	OTHER	Z	D9Z	
VEHICLES	E	FIRE	1	MINI-PUMPER	A	E1A	EA.
VEHICLES	E	FIRE	1	TRIPLE COMBINATION PUMPER	B	E1B	EA.
VEHICLES	E	FIRE	1	PORT. FIRE PUMP TRAILER	C	E1C	EA.
VEHICLES	E	FIRE	1	OTHER	Z	E1Z	EA.
VEHICLES	E	SOLID WASTE	2	COMPACTOR	A	E2A	EA.
VEHICLES	E	SOLID WASTE	2	UNMODIFIED VEHICLE	B	E2B	EA.
VEHICLES	E	SOLID WASTE	2	OTHER	Z	E2Z	EA.
VEHICLES	E	LIQUID WASTE	3	COMMERCIAL PUMPER	A	E3A	EA.
VEHICLES	E	LIQUID WASTE	3	UNMODIFIED VEHICLE	B	E3B	EA.
VEHICLES	E	LIQUID WASTE	3	OTHER	Z	E3Z	EA.
VEHICLES	E	WATER DELIVERY	4	COMMERCIAL TANKER	A	E4A	EA.
VEHICLES	E	WATER DELIVERY	4	UNMODIFIED VEHICLE	B	E4B	EA.
VEHICLES	E	WATER DELIVERY	4	OTHER	Z	E4Z	EA.
VEHICLES	E	EDUCATION	5	SCHOOL BUS 12	A	E5A	EA.
VEHICLES	E	EDUCATION	5	SCHOOL BUS 25	B	E5B	EA.
VEHICLES	E	EDUCATION	5	SCHOOL BUS 40	C	E5C	EA.
VEHICLES	E	EDUCATION	5	SCHOOL BUS 72	D	E5D	EA.
VEHICLES	E	EDUCATION	5	OTHER	Z	E5Z	EA.
VEHICLES	E	BAND ADMINISTRATION	6	CAR, SEDAN	A	E6A	EA.
VEHICLES	E	BAND ADMINISTRATION	6	CAR, STATION WAGON	B	E6B	EA.
VEHICLES	E	BAND ADMINISTRATION	6	TRUCK 1/2 TON	C	E6C	EA.

CAPITAL ASSETS MANAGEMENT SYSTEM ASSET CODES

Category	Cat	Class	CI	Subclass	Sub	Asset Code	Units
VEHICLES	E	BAND ADMINISTRATION	6	TRUCK 3/4 TON	D	E6D	EA.
VEHICLES	E	BAND ADMINISTRATION	6	VAN	E	E6E	EA.
VEHICLES	E	BAND ADMINISTRATION	6	OTHER	Z	E6Z	EA.
VEHICLES	E	CONSTRUCTION	7	BACKHOE	A	E7A	EA.
VEHICLES	E	CONSTRUCTION	7	BULLDOZER D4	B	E7B	EA.
VEHICLES	E	CONSTRUCTION	7	BULLDOZER D6	C	E7C	EA.
VEHICLES	E	CONSTRUCTION	7	BULLDOZER D7	D	E7D	EA.
VEHICLES	E	CONSTRUCTION	7	BULLDOZER OTHER	E	E7E	EA.
VEHICLES	E	CONSTRUCTION	7	COMPACTOR, PLATE	F	E7F	EA.
VEHICLES	E	CONSTRUCTION	7	COMPACTOR, ROLLER	G	E7G	EA.
VEHICLES	E	CONSTRUCTION	7	COMPRESSOR, PORTABLE	H	E7H	EA.
VEHICLES	E	CONSTRUCTION	7	EQUIPMENT, THAWING	I	E7I	EA.
VEHICLES	E	CONSTRUCTION	7	FRONT END LOADER	J	E7J	EA.
VEHICLES	E	CONSTRUCTION	7	GENERATOR, PORTABLE	K	E7K	EA.
VEHICLES	E	CONSTRUCTION	7	GRADER	L	E7L	EA.
VEHICLES	E	CONSTRUCTION	7	MISCELLANEOUS	M	E7M	EA.
VEHICLES	E	CONSTRUCTION	7	PUMP, PORTABLE	N	E7N	EA.
VEHICLES	E	CONSTRUCTION	7	TRAILER	O	E7O	EA.
VEHICLES	E	CONSTRUCTION	7	TRAILER	P	E7P	EA.
VEHICLES	E	CONSTRUCTION	7	TRUCK, 1/2 TON	Q	E7Q	EA.
VEHICLES	E	CONSTRUCTION	7	TRUCK, 3/4 TON	R	E7R	EA.
VEHICLES	E	CONSTRUCTION	7	TRUCK, DUMP 3 TON	S	E7S	EA.
VEHICLES	E	CONSTRUCTION	7	TRUCK, DUMP 5 TON	T	E7T	EA.
VEHICLES	E	CONSTRUCTION	7	TRUCK, DUMP OTHER	U	E7U	EA.
VEHICLES	E	CONSTRUCTION	7	OTHER	Z	E7Z	EA.
VEHICLES	E	COMMERCIAL	8	BACKHOE	A	E8A	EA.
VEHICLES	E	COMMERCIAL	8	BULLDOZER	B	E8B	EA.
VEHICLES	E	COMMERCIAL	8	CAR, SEDAN	C	E8C	EA.
VEHICLES	E	COMMERCIAL	8	CAR, STATION WAGON	D	E8D	EA.
VEHICLES	E	COMMERCIAL	8	COMPACTOR, PLATE	E	E8E	EA.
VEHICLES	E	COMMERCIAL	8	COMPACTOR, ROLLER	F	E8F	EA.
VEHICLES	E	COMMERCIAL	8	COMPRESSOR, PORTABLE	G	E8G	EA.

CAPITAL ASSETS MANAGEMENT SYSTEM ASSET CODES

Category	Cat	Class	CI	Subclass	Sub	Asset Code	Units
VEHICLES	E	COMMERCIAL	8	EQUIPMENT, THAWING	H	E8H	EA.
VEHICLES	E	COMMERCIAL	8	FRONT END LOADER	I	E8I	EA.
VEHICLES	E	COMMERCIAL	8	GENERATOR, PORTABLE	J	E8J	EA.
VEHICLES	E	COMMERCIAL	8	GRADER	K	E8K	EA.
VEHICLES	E	COMMERCIAL	8	MISCELLANEOUS	L	E8L	EA.
VEHICLES	E	COMMERCIAL	8	PUMP, PORTABLE	M	E8M	EA.
VEHICLES	E	COMMERCIAL	8	TRAILER	N	E8N	EA.
VEHICLES	E	COMMERCIAL	8	TRUCK, 1/2 TON	O	E8O	EA.
VEHICLES	E	COMMERCIAL	8	TRUCK, 3/4 TON	P	E8P	EA.
VEHICLES	E	COMMERCIAL	8	TRUCK, DUMP	Q	E8Q	EA.
VEHICLES	E	COMMERCIAL	8	OTHER	Z	E8Z	EA.

GENERIC LISTING OF O & M FUNDED ASSETS

Subclass	Asset Code
OFFICE	A1A
TRADE SHOP/WORKSHOP (MUN.)	A2A
GARAGE (MUNICIPAL)	A2B
WAREHOUSE (BAND OR SCHOOL)	A2C
SCHOOL	A3A
FIRE STATION	A3H
STUDENT RESIDENCE	A4I
TEACHERAGE	A4L
WATER SUPPLY/TREATMENT	A5A
WASTEWATER TREATMENT DISPOSAL	A5B
SOLID WASTE DISPOSAL	A5D
CTTY REC CTR/HALL/CULT CTR	A6A
ARENA	A6B
GYMNASIUM	A6C
INDOOR SWIMMING POOL	A6D
CLUB HS/YTH CTR/SR CIT/DROP-IN	A6E
HEATED WATER MAINS	B1A
WATER MAINS	B1B
WATER TREATMENT SYSTEM	B1C
WATER TREATMENT UNIT	B1D
WATER STORAGE	B1E
COMMUNITY WELLS	B1F
WATER STANDPIPES	B1G
HIGH LEVEL LIFTSTATION	B1H
LOW LEVEL LIFTSTATION	B1I
SANITARY MAIN	B2A
STORM MAIN	B2B
RBC/TRICKLING FILTER	B2C
EXTENDED AERATION PLANT	B2D
LAGOON	B2E
CTTY SEPTIC TANK AND FIELD	B2F
JET-PUMP DISPOSAL	B2G
LIFTSTATION	B2H
AERATED LAGOON	B2I
LOW PRESSURE CONNECTION	B2Q
STREET LIGHTS	B3C
REFUSE SITE	B4A
LANDFILL SITE	B4B
INCINERATOR	B4C
SURFACE TREATED ROADS	D1C
PAVED ROADS	D1D
VEHICULAR BRIDGES	D2A
PEDESTRIAN BRIDGES	D2B

GENERIC LISTING OF O & M FUNDED ASSETS

Subclass	Asset Code
LARGE CULVERTS	D2C
MINI-PUMPER	E1A
TRIPLE COMBINATION PUMPER	E1B
COMMERCIAL PUMPER	E3A
UNMODIFIED VEHICLE	E3B
COMMERCIAL TANKER	E4A
UNMODIFIED VEHICLE	E4B

ASSET CODE DEFINITIONS
CATEGORY: BUILDINGS**CLASS: ADMINISTRATIVE****A1A OFFICE**

<u>Definition:</u>	A building or space in a building used as office space in which departmental program or band administrative and managerial activities take place.
<u>Unit of Measurement:</u>	Square metre, gross floor area (external dimension).
<u>Typical Inclusion:</u>	Band offices, and administration buildings, band council buildings.
<u>Typical Exclusions:</u>	Construction supervisor offices, rented office space, foreman-type offices in other classes of building (e.g. A2B garages), district offices not owned by the Department.

CLASS: OPERATIVE**A2A TRADE SHOP/WORKSHOP MUNICIPAL****A2B GARAGE (MUNICIPAL)****A2C WAREHOUSE (BAND OR SCHOOL)**

<u>Definition:</u>	A building or space in a building where operation and maintenance activities are carried out. These would include equipment and vehicle repair, supplies, equipment and vehicle storage.
<u>Unit of Measurement:</u>	Square metre, gross floor area (external dimension).
<u>Typical Inclusions:</u>	Buildings used as workshops, storage or warehouses, including storage of educational supplies, equipment and vehicles; community freezer and ice storage houses; and boat houses when used for band O & M activities.
<u>Typical Exclusions:</u>	Nursery or green houses, barns or stables, forest fire towers; operative type buildings used for commercial or industrial purposes.

CLASS: INSTITUTIONAL**A3A SCHOOL**

Definition: A building or space in a building where a curriculum at the kindergarten, primary, elementary or secondary level is taught which could include space for classrooms, industrial arts, home economics, computer science, commercial, library, gymnasium and directly associated support space (e.g. principal's office, staff room, washrooms, storage, etc.).

Unit of Measurement: Square metre, gross floor area (external dimension).

Typical Inclusions: Kindergarten, elementary and secondary schools including portable or temporary accommodation for school.

Typical Exclusions: Adult training centres, space used for post secondary education, museums, buildings used for storage of educational supplies and equipment which come under the operative class A2.

A3B DAYCARE CENTRE

Definition: A building or space in a building where educational and recreational activities below the kindergarten level are carried out. Space in the building may be provided for activity rooms, washrooms, office and staff rooms, kitchen, lunch room and storage.

Unit of Measurement: Square metre, gross floor area (external dimension).

Typical Inclusions: Daycare centre including both permanent, portable or temporary accommodation.

Typical Exclusions: Schools; space used for the care or rehabilitation of handicapped persons come under the institutional classification A3K, i.e., the training centre (trades, handicap) sub-class.

A3H FIRE STATION

<u>Definition:</u>	A building or part of a building which accommodates fire suppression, prevention and inspection activities. Activities taking place in the building would include storage and minor maintenance of fire fighting equipment and trucks, training, administration, control and dispatch of equipment. The building may include space for storage, workshop, office staff and training rooms/facilities.
<u>Unit of Measurement:</u>	Square metre, gross floor area (external dimension).
<u>Typical Inclusions:</u>	A single building or portion of a multi-purpose building which must contain fire suppression apparatus.
<u>Typical Exclusions:</u>	Material storage buildings, office space for fire inspector in band administration buildings.

CLASS: RESIDENTIAL**A4I STUDENT RESIDENCE**

<u>Definition:</u>	A building or part of a building where students reside who are attending school as described in the asset definition, School A3A. The facility serves as accommodation for the students in order for them to attend school. The accommodation could include sleeping quarters (rooms), dining facilities including cafeterias, washrooms, office space, recreational and storage rooms.
<u>Unit of Measurement:</u>	Square metre, gross floor area (external dimension).
<u>Typical Exclusions:</u>	Group homes, bunkhouses, hostels, transient centres.

A4L TEACHERAGE

<u>Definition:</u>	A housing unit furnished by the band or department located on a reserve which is used to provide living accommodation
---------------------------	---

for teachers employed at departmental or band operated schools. The accommodation would include those facilities normally associated with a residential unit.

Unit of Measurement: Square metre, gross floor area (external dimension).

Typical Inclusions: Single family houses, semi-detached houses, multi-family houses, portables, mobile homes or trailers.

Typical Exclusions: Band housing, group homes, motels, student centres.

CLASS: UTILITY

A5A WATER SUPPLY/TREATMENT

A5B WASTEWATER TREATMENT DISPOSAL

A5C ELECTRICAL POWER GENERATION

A5D SOLID WASTE DISPOSAL

A5E CENTRAL HEATING PLANT

Definition: A building which contains equipment and materials to support the municipal services, (Category B- Utility) function. The building may contain pumps, piping, tanks, water and wastewater treatment equipment, power generation equipment as well as office, washroom, laboratory and storage space.

Unit of Measurement: Square metre, gross floor area (external dimension).

Typical Inclusions: Water supply, distribution and treatment buildings, wastewater collection treatment and disposal buildings, electrical power generating plants.

Typical Exclusions: Buildings used strictly for storage (e.g. treatment materials), reservoirs, wells, stand pipes, garages for the storage and maintenance of water and waste disposal vehicles. These buildings are to be included in the operative classification (A2).

CLASS: RECREATIONAL**A6A COMMUNITY RECREATION CENTRE/HALL/CULTURAL CENTRE****A6B ARENA****A6C GYMNASIUM****A6D INDOOR SWIMMING POOL****A6E CLUBHOUSE/YOUTH CENTRE SENIOR CITIZEN/DROP-IN**

Definition: A building or space in a building where band or community cultural recreation and cultural activities take place. These could include facilities for sports, exercise activities, community meetings, adult education cultural programs.

Unit of Measurement: Square metre, gross floor area (external dimension).

Typical Inclusions: Types of buildings as listed above, curling rinks.

Typical Exclusions: Churches, museums, marina, outdoor rinks and outdoor swimming pools; camp grounds, booths, shelters, sports fields, rodeo grounds.

CATEGORY: UTILITY**CLASS: WATER SUPPLY, TREATMENT AND DISTRIBUTION****B1A HEATED WATER MAINS**

Definition: All heat traced piping used to convey water from source of supply to service line connection at the main.

Unit of Measurement: Metre.

Typical Inclusions: All associated valves and hydrants.

Typical Exclusion: Service lines from the service line connection at the main to the user.

B1B WATER MAINS

<u>Definition:</u>	All piping (except heat traced - see B1A) used to convey water from source of supply to service line connection at the main.
<u>Unit of Measurement:</u>	Metre.
<u>Typical Inclusions:</u>	All associated valves and hydrants.
<u>Typical Exclusion:</u>	Service lines from the service line connect at the main to the user.

B1C WATER TREATMENT SYSTEM

<u>Definition:</u>	All equipment used for conventional water treatment.
<u>Unit of Measurement:</u>	Each.
<u>Typical Inclusions:</u>	Coagulation, flocculation, sedimentation, filtration equipment, and a high level lift station.
<u>Typical Exclusion:</u>	Host building.

B1D WATER TREATMENT UNIT

<u>Definition:</u>	All equipment used for treating community water supply.
<u>Unit of Measurement:</u>	Each.
<u>Typical Inclusions:</u>	Softening unit, iron removal unit (greensand filter), pressure filter or equivalent treatment. Each of the above items is one treatment unit.
<u>Typical Exclusion:</u>	Host building.

B1E **WATER STORAGE**

<u>Definition:</u>	All above or below ground facilities 20,000 L or larger to store water for community use.
<u>Unit of Measurement:</u>	Each.
<u>Typical Inclusions:</u>	All drains, vents, overflows and related equipment.
<u>Typical Exclusion:</u>	Pressure tanks - these are considered to be included in B1F and B1H.

B1F **COMMUNITY WELLS**

<u>Definition:</u>	All ground water wells used to supply water to the community at large.
<u>Unit of Measurement:</u>	Each.
<u>Typical Inclusions:</u>	Well pump, pressure tanks and chlorination equipment.
<u>Typical Exclusion:</u>	Host building.

B1G **WATER STANDPIPES**

<u>Definition:</u>	All equipment used for community watering points (standpipes). These would normally be provided on a piped water distribution system to enable users to collect their own water.
<u>Unit of Measurement:</u>	Each.
<u>Typical Exclusion:</u>	Heat traced supply line, spring release mechanical valve and related equipment.
<u>Typical Exclusion:</u>	Host building or shed; heated mains.

B1H HIGH-LEVEL LIFTSTATION

<u>Definition:</u>	All pumping facilities used to <u>pressurize</u> the main distribution system. In this case the source of raw water is usually either a community well or a low level pumphouse.
<u>Unit of Measurement:</u>	Each.
<u>Typical Inclusions:</u>	Pressure tanks, pumps and chlorination equipment.
<u>Typical Exclusion:</u>	Host building.

B1I LOW-LEVEL LIFTSTATION

<u>Definition:</u>	All equipment to pump water from a surface water supply to treatment facilities or storage.
<u>Unit of Measurement:</u>	Each.
<u>Typical Inclusions:</u>	Intake line, clear well, pumps and chlorination equipment.
<u>Typical Exclusion:</u>	Host building.

CLASS: WASTEWATER COLLECTION, TREATMENT AND DISPOSAL SYSTEM**B2A SANITARY MAIN**

<u>Definition:</u>	All piping used to transport wastewater from the service line connection at the main to a community treatment plant or adjacent municipal connection.
<u>Unit of Measurement:</u>	Metre.
<u>Typical Inclusion:</u>	Network of gravity mains, manholes, and appurtenances associated with wastewater collection.
<u>Typical Exclusion:</u>	Service lines from the user to the service line connection at the main; liftstations and forcemains.

B2B STORM MAIN

Definition: All piping used to collect surface drainage from storm runoff.

Unit of measurement: Metre.

Typical Inclusion: Network of gravity mains, manholes and catch basins.

Typical Exclusions: Ditches and culverts.

B2C RBC/TRICKLING FILTER

Definition: Mechanical treatment plant designed to treat community wastewater.

Unit of Measurement: Each.

Typical Inclusions: All equipment, tanks, filter media and processes associated with biological treatment; gravity outfall lines.

Typical Exclusion: Host building.

B2D EXTENDED AERATION PLANT

Definition: Mechanical treatment plant designed to treat community wastewater.

Unit of Measurement: Each.

Typical Inclusion: All equipment, tanks, aeration system and processes associated with biological treatment; gravity outfall lines.

Typical Exclusion: Host building.

B2E LAGOON

Definition: Earthen basin (s) designed to treat community wastewater.

Unit of Measurement: Each.

Typical Inclusions: All lagoon cells, inlet and outlet devices, piping and processes associated with biological treatment; gravity outfall lines.

Typical Exclusion: Liftstation and forcemain.

B2F COMMUNITY SEPTIC TANK AND FIELD

Definition: Community septic tank/holding tank designed for wastewater disposal.

Unit of Measurement: Each.

Typical Inclusion: Disposal field.

B2G JET-PUMP DISPOSAL

Definition: Community septic tank designed for wastewater disposal by means of a sewage ejector system.

Unit of Measurement: Each.

B2H LIFTSTATION

Definition: All equipment used to lift wastewater from a low point in a collection system to a higher elevation.

Unit of Measurement: Each.

Typical Inclusion: Dry well, wet well, pumps, piping and valves.

Typical Exclusion: Host building.

B2I AERATED LAGOON

Definition: Lagoon designed to treat community wastewater by means of mechanical aeration.

Unit of Measurement: Each.

Typical Inclusions: All lagoon cells, piping, aeration equipment and processes associated with biological treatment; gravity outfall lines.

Typical Exclusion: Buildings housing mechanical treatment equipment.

B2J FORCEMAIN

Definition: All piping used to transport wastewater from a sewage liftstation to a gravity collection system or community treatment plant.

Unit of Measurement: Metre.

Typical Inclusions: All pressure mains and appurtenances.

B2Q LOW PRESSURE SEWER

Definition: System to transport wastewater from user to community treatment plant or adjacent municipal connection through low pressure mains, septic tanks to settle the solids and pumps (non-grinder) to pump liquid from the septic tank to the mains.

Unit of Measurement: Each

Typical inclusions: Septic tanks, pumps (non-grinder) and piping.

CLASS: ELECTRICAL POWER SUPPLY AND DISTRIBUTION SYSTEM**B2A MINI-HYDRO**

Definition: INAC/Band owned water driven electric power generating source on reserves usually in combination with standby diesel-driven generators, rated in kw.

	<u>Unit of Measurement:</u>	Each.
	<u>Typical Inclusions:</u>	Dam, water intake system and control.
	<u>Typical Exclusions:</u>	Generator, building, wind generation.
B2B	<u>DIESEL GENERATORS</u>	
	<u>Definition:</u>	INAC/Band owned diesel-engine driven electric power generating source on reserves, consisting of one or two units with no synchronizability and a minimum of three units with synchronizability, rated in kW.
	<u>Unit of Measurement:</u>	Each.
	<u>Typical Inclusions:</u>	Control panels.
	<u>Typical Exclusions:</u>	Diesel-generator building.
B3C	<u>STREET LIGHTS</u>	
	<u>Definition:</u>	INAC/Band owned street lights, usually installed on existing power distribution poles, and typically consisting of 150 watt "High Intensity Discharge" lamps and luminaries.
	<u>Unit of Measurement:</u>	Each.
	<u>Typical Inclusions:</u>	Lighting fixtures, mounting hardware, power connection, control and grounding.
	<u>Typical Exclusions:</u>	Street lights provided under contract by Power Supply Authority.
B3D	<u>TRANSMISSION LINES</u>	
	<u>Definition:</u>	INAC/Band owned transmission line, supplying electrical power a reserve from some remote/outside source. Transmission is almost exclusively via an overhead pole line.
	<u>Unit of Measurement:</u>	Kilometre.
	<u>Typical Inclusions:</u>	Pole line and substation.
	<u>Typical Exclusions:</u>	Distribution lines.

B3E DISTRIBUTION LINES

<u>Definition:</u>	INAC/Band owned distribution line, distributing power on the reserve from the transmission sub-station or local generating plant to the various users. Distribution is usually via a overhead pole line with the possible exception of an underground cable run to a school, based on specific site requirements.
<u>Unit of Measurement:</u>	Kilometre.
<u>Typical Inclusions:</u>	Pole line, transformers, fuses, lightning arresters, guying, tap-offs to loads.
<u>Typical Exclusions:</u>	Transmission line and substation.

CLASS: SOLID WASTE DISPOSAL SYSTEM**B4A REFUSE SITE**

<u>Definition:</u>	An area used for the disposal of solid waste (garbage dump/pit).
<u>Unit of Measurement:</u>	Each.
<u>Typical Exclusion:</u>	Vehicles associated with operation.

B4B LANDFILL SITE

<u>Definition:</u>	An area assigned to receive solid waste including spreading, compaction and covering waste with soil.
<u>Unit of Measurement:</u>	Each.
<u>Typical Exclusion:</u>	Garbage dump/pit. Vehicles associated with operation.

B4C INCINERATOR

Definition: All equipment used in the incineration of community solid waste.

Unit of Measurement: Each.

Typical Exclusion: Incinerators servicing individual facilities such as schools. Excludes 45 gallon drum.

CATEGORY: TRANSPORTATION**CLASS: RESERVE ROADS****Class Definition**

Public roads including service access roads located on reserve for the benefit of the entire community and for the purpose of providing vehicular access to provincial road systems, residential areas and to public facilities such as schools, band offices, sewage treatment plants, landfill sites, etc. Reserve Roads exclude third-party roads, off-reserve roads, private entrances and access roads to private economic ventures.

D1A EARTH ROADS

Definition: Seasonal roads constructed of native materials without the addition of surface improvement materials such as gravel.

Unit of Measurement: Kilometre.

D1B GRAVEL ROADS

Definition: Roads with a riding surface constructed of crushed, screened or native gravel.

Unit of Measurement: Kilometre.

D1C SURFACE TREATED ROADS

Definition: Roads with a low class asphaltic surface such as chipseals, bituminous surface treatments, oil treatments, etc.

Unit of Measurement: Kilometre.

D1D PAVED ROADS

Definition: Roads with a riding surface paved with a hot mixed asphaltic concrete.

Unit of Measurement: Kilometre.

CLASS: RESERVE BRIDGES**Class Definition**

Public structures located on reserve for the benefit of the entire community and for the purpose of carrying vehicular and pedestrian traffic across depressions and obstacles such a gullies, roadways, waterways, railways, etc. Reserve Bridges include large culverts whose span exceeds 3 metres, and are located on roads defined in D1 - Reserve Roads.

D2A VEHICULAR

Definition: Bridges designed to carry vehicular traffic.

Unit of Measurement: Square metres of deck area.

D2B PEDESTRIAN BRIDGES

Definition: Bridges designed to carry pedestrian traffic only.

Unit of Measurement: Square metres of deck area.

D2C LARGE CULVERTS

Definition: Structures with a span (width of opening) exceeding 3 metres which are placed under a road embankment for the passage of surface water, livestock or pedestrians.

Unit of Measurement: Square metres of plan.

CLASS: OTHER ROADS**Class Definition**

Private roads, entrances and third-party roads which are located on or off reserve, and where the band is the major user.

D7A THIRD-PARTY ROADS

Definition: Portions of road networks belonging to third party agencies such as provinces, counties, municipalities, etc., located within the boundaries of the reserve.

Unit of Measurement: Kilometre.

D7B PRIVATE ACCESS ROADS

Definition: All farm access roads and any other access roads to private economic ventures located on-reserve such as sawmills, campgrounds, logging operations, stores, etc.

Unit of Measurement: Kilometre.

D7C PRIVATE ENTRANCES

Definition: All entrances, laneways, and driveways to private dwellings for the exclusive use of the property occupants.

Unit of Measurement: Kilometre.

D7D OFF-RESERVE ROADS

Definition: Roads located outside the boundaries of the reserve which are used almost exclusively by the band and are often the only link between the reserve and the provincial road system.

Unit of Measurement: Kilometre.

CLASS: OTHER BRIDGES**Class Definition**

All vehicular and pedestrian bridges and large culverts, as defined in D2 - Reserve Bridges, which are located on roads defined in D7 - Other Roads, and where the band is the major user.

D8A THIRD-PARTY BRIDGES**Definition:**

Bridges and large culverts located on roads belonging to third party agencies as defined under D7A.

Unit of Measurement:

Square metres of deck area/on plan.

D8B PRIVATE ACCESS BRIDGES**Definition:**

Bridges and large culverts located on Private Access Roads defined under D7B.

Unit of Measurement:

Square metres of deck area/on plan.

D8C PRIVATE ENTRANCE BRIDGES**Definition:**

Bridges and large culverts located on Private Entrances defined under D7C.

Unit of Measurement:

Square metres of deck area/on plan.

D8D OFF-RESERVE BRIDGES**Definition:**

Bridges and large culverts located on off-reserve roads defined under D7D.

Unit of Measurement:

Square metres of deck area/on plan.

CATEGORY: VEHICLES**CLASS: FIRE FIGHTING****E1A MINI PUMPER**

Definition: Truck with either 4 X 2 or 4 X 4 wheel drive. Gross Vehicle Weight Rating (GVWR) 4,889 to 5,896 kg (11,000 to 13,000 lbs.). Fire fighting pump rated at 1,363 litres per minute (300 gpm). Water tank capacity 1,591 litres (350 gallons) or smaller.

Unit of Measurement: Each.

E1B TRIPLE COMBINATION PUMPER

Definition: Truck with either 4 X 2 or 4 X 4 wheel drive. Gross Vehicle Weight Rating (GVWR) 6,550 to 15,876 kg. (14,000 to 35,000 lbs.) With a fire fighting capability to:

- a. pump water from its own reservoir;
- b. draft water from a source; and
- c. increase water pressure from a source such as a hydrant, or to a source such as building sprinkler system.

The fire fighting pump may have a rating from 1,932 to 3,750 litres per minute (425 to 825 gpm). Water tank capacity from 2,279 litres to 9,092 litres (500 to 2,000 gallons).

Unit of Measurement: Each.

E1Z FIRE FIGHTING VEHICLES (OTHER)

Definition: Motor vehicle chassis of any size or a towed trailer (other) of any size not specifically designed as fire truck but which is equipped with a tank and/or pump.

Unit of Measurement: Each.

CLASS: SOLID WASTE**E2A SOLID WASTE - COMPACTOR**

Definition: A motor vehicle chassis ranging from 5,896 to 15,876 kg (13,000 to 35,000 lbs). Gross Vehicle Weight Rating (GVWR), fitted with a closed container with hydraulic capability to compress solid waste. Loading may be accessible from the rear or either side.

Unit of Measurement: Each.

E2B SOLID WASTE - UNMODIFIED

Definition: A motor vehicle chassis of any size, fitted with a closed or open container which is dedicated part time to the purpose of collecting solid waste.

Unit of Measurement: Each.

E2Z SOLID WASTE - OTHER

Definition: A motor vehicle chassis of any type or a towed trailer used for the purpose of collection of solid waste on an infrequent or as necessary basis.

Unit of Measurement: Each.

CLASS: LIQUID WASTE**E3A LIQUID WASTE - COMMERCIAL TANKER**

Definition: A motor vehicle chassis ranging from 7,711 to 15,876kg (17,000 to 35,000 lbs.) Gross Vehicle Weight (GVWR), commercially designed with special tanks with a capacity ranging from 2,273 to 6,819 litres (500 to 1,500 gallons) or more to be used for the purpose of pumping liquid waste. Pump capacity and type may vary.

Unit of Measurement: Each.

E3B LIQUID WASTE - UNMODIFIED CHASSIS

Definition: A motor vehicle of any unmodified chassis size on to which a portable tank and pump has been temporarily mounted for the purpose of pumping and collecting waste water as required.

Unit of Measurement: Each.

E3Z LIQUID WASTE COLLECTION (OTHER)

Definition: A motor vehicle chassis of any type or a towed trailer with a tank and with or without a pump used for the purpose of collecting waste water, on an infrequent or as required basis.

Unit of Measurement: Each.

CLASS: WATER DELIVERY**E4A WATER DELIVERY COMMERCIAL TANKER**

Definition: A motor vehicle chassis ranging from 7,712 to 15,876kg (17,000 to 35,000 lbs.) Gross Vehicle Weight (GVWR), fitted with a permanently mounted tank with a capacity ranging from 2,954 to 6,819 litres (650 to 1,500 gallons) either with a pump or gravity dispensing system.

Note: Some of these vehicles may have a fire fighting capability by the use of an extra pump for pressurizing water (i.e. combination water delivery, fire fighting vehicle).

Unit of Measurement: Each.

E4B WATER DELIVERY UNMODIFIED CHASSIS

Definition: A motor vehicle of any unmodified chassis size onto which a portable tank is temporarily mounted for the purpose of delivering potable water; using either a pump or gravity for delivery.

Unit of Measurement: Each.

E4Z WATER DELIVERY (OTHER)

Definition:

A portable water tank used for delivery of potable water to a dwelling:

- a) installed on the rear of a vehicle, or**
- b) a tank trailer, or**
- c) a tank mounted on a single wheeled axle.**

Unit of Measurement:

Each.